



July/AUG  
191

# WITNESS

*150 years*

Faithful to Christ's VISION

THE BAPTIST HERALD

North American Baptist Conference

# What We Believe

*A condensation of the "Statement of Beliefs" of the North American Baptist Conference.*

**W**hen we become Christians, we are born into God's family. When we join a local church, we become part of that family. If that local church has chosen to be a part of the North American Baptist Conference, we automatically become a part of that larger family. Our common experience with Jesus Christ and common commitment to His mission in the world is the glue that holds us together as a Conference family today.

- We believe the Bible is God's Word given by divine inspiration, the record of God's revelation of Himself to humanity. It is trustworthy, sufficient, without error—the supreme authority and guide for all doctrine and conduct; the truth by which God brings people into a saving relationship with Himself and leads them to Christian maturity.
- We believe in the one living and true God, perfect in wisdom, sovereignty, holiness, justice, mercy, and love. He exists eternally in three coequal persons who act together in creation, providence, and redemption.
- We believe God created an order of spiritual beings called angels to serve Him and do His will.
- We believe God created man

in His own image to have fellowship with Himself and to be stewards over His creation. As a result, each person is unique, possesses dignity, and is worthy of respect. Through the temptation of Satan, Adam chose to disobey God; this brought sin and death to the human race and suffering to all creation. Therefore, everyone is born with a sinful nature and needs to be reconciled to God. Satan tempts people to rebel against God, even those who love Him. Nonetheless, everyone is personally responsible to God for thoughts, actions, and beliefs and has the right to approach Him directly through Jesus Christ, the only mediator.

- We believe salvation is redemption by Christ of the whole person from sin and death. It is offered as a free gift by God to all and must be received personally through repentance and faith in Jesus Christ.
- We believe the Church is the body of which Christ is the head and all who believe in Him are members. Christians are commanded to be baptized upon profession of faith and to unite with a local church for mutual encouragement and growth in discipleship through worship,

nurture, service, and the proclamation of the Gospel of Jesus Christ to the world. Each church is a self-governing body with a congregational form of government under the Lordship of Christ with all members sharing responsibility. Its ordinances are baptism by immersion and the Lord's Supper.

- We believe religious liberty, rooted in Scripture, is the inalienable right of all individuals to freedom of conscience with ultimate accountability to God. Church and state exist by the will of God. Each has distinctive concerns and responsibilities, free from control by the other.
- We believe Christians, individually and collectively, are salt and light in society. We affirm the family as the basic unit of society and seek to preserve its integrity and stability.
- We believe God, in His own time and in His own way, will bring all things to their appropriate end and establish the new heaven and the new earth. The certain hope of the Christian is that Jesus Christ will return to the earth suddenly, personally, and visibly in glory according to His promise. The dead will be raised, and Christ will judge mankind in righteousness. □

# A People of Vision

*Celebrating 150 years of witness . . . cooperating together to make Vision 2000 a reality*

**I**n the early 1840s, our leaders from their study of the Bible concluded that Biblical baptism consisted of baptism by immersion on confession of faith in Christ. Originating from Europe with a State Church background, they rejected infant baptism and acted on their vision to plant churches — fellowships of baptized believers.

In 1988 at the Triennial Conference in Calgary, delegates committed the North American Baptist Conference to accelerate planting churches through the New Churches . . . New Life emphasis of **Vision 2000**. Our people continue to be a people of vision.

Our early forefathers felt strongly that it was their mission to bring the Gospel to the tens of thousands of immigrants coming to North America each year. This vision continues today as our churches witness and open their doors to new immigrants. Today we find in our churches people of many cultures, diverse heritages, and various ethnic backgrounds—worshipping God and experiencing spiritual growth.

The vision of the early leaders also included providing theological education to train ministers to serve the new

churches. This continues with renewed commitment today as our Conference prepares ministers through our two theological schools.

In the early days of the Conference, leaders reminded the people of the religious freedom enjoyed in America. They challenged their people to "a greater effort in promoting the work of the church." With the crisis in morals and values in North America today, God continues to call us through **Vision 2000** to renewed commitment to Him and to His work.

Our early leaders called their people to a high level of spiritual life and to fervent prayer — necessary for the growth of healthy churches. Again we are challenged to pray and to grow spiritually—to experience spiritual renewal.

Our Conference has been and continues to be known for its conservative theology. But now, as then, we are equally concerned about vital Christian living — about addressing the realities and issues of the day.

Since 1883 our Conference has been committed to world evangelization through planting churches overseas. Presently, we witness in six overseas countries. The time line appearing in this issue gives

you a glimpse of the various countries where our Conference has given and continues to give a Gospel witness.

Celebrating 150 years of witness, our Conference continues to be binational with close to 400 churches in Canada and the United States. The Conference is divided into 20 associations of churches that are joined together for mutual encouragement, fellowship, and church planting.

**W**e are a people of vision — committed to God's work through **Vision 2000**. This issue highlights each department's emphasis on the Biblical imperative: Commissioned to Witness. We are a people who have excellent gifts bestowed by God and who use them sacrificially for God's glory and the building of the Kingdom of God.

We are fulfilling the mission God has entrusted to us: "to reconcile the world through Christ." This characterizes the people of the churches who are the North American Baptist Conference — cooperatively working together to make **Vision 2000** a reality! □



*The complete statement as well as a study guide is available from the Conference International Office.*

1840	1842	1843	1846	1847	1848	1848	1849
K. A. Fleischmann evangelizes German settlements, Lycoming County, PA	K. A. Fleischmann starts German Baptist Church (Clinton Hill), Newark, NJ	K. A. Fleischmann organizes German (Fleischmann Memorial) Church, Philadelphia, PA	First German Baptist Church, New York, NY, organized; Johann Eschmann, pastor	William Grimm and 14 others arrive in Milwaukee, WI	Baptist Church (Latta Road Baptist), Rochester, NY, organized; pastors: Carol Roos, Andreas Heinrich	Heinrich Schneider goes to Upper Canada as colporteur; baptized in 1851	German Baptist Church (now in Cheektowaga) organized in Buffalo, NY, Alexander van Puttkamer, pastor

1850	1850	1851	1851	1851	1851	1852
Baptist Church in St. Louis, MO, organized; Shoemaker, pastor	Baptist Church in Chicago, IL, organized; Konrad Lesler, pastor	1st Conference of German Baptists in North America, Philadelphia, PA	Issues discussed: Confession of Faith; Statement of Church Order; the vision for a periodical, hymnal, and ministerial training; the Lord's Supper; against membership in secret societies; against slavery	Bridgeport, Waterloo County, Canada, church organized by August Rauschenbusch; Heinrich Schneider, pastor	635 members, 8 churches, 52 small groups scattered as far west as Wisconsin and Illinois	Second Conference, Rochester, NY

# Capture a New Global Vision to Witness

by John Binder

**M**y recent travels to China, Japan, and Korea, conversations with various Christian leaders, and reading of articles and books in preparation for our Witness Imperative have crystallized for me a new global vision of the possibilities of Christian witnessing by the year 2000.

## Why should Christians be concerned about actively witnessing?

- Because that is God's crystal-clear instruction to us.
- It should be something natural to us, as recipients of God's love and blessing.
- There are still 12,000 unreached people groups who have no visible church witness.

"Those who lead many to righteousness will shine like stars forever . . ." (*Daniel 12:3*).

"Those who win souls are wise . . ." (*Proverbs 11:30*).

"You are the salt of the earth . . . you are the light of the world . . ." (*Matthew 5:13-16*).

"Therefore, go and make disciples of all nations, baptizing them . . . teaching them . . . and I will be with you always . . ." (*Matthew 28:19-20*).

"You will be my witnesses . . . in Jerusalem, and in all

Judea and Samaria, and to the ends of the earth" (*Acts 1:8*).  
These imperatives from the Lord should be enough to motivate a clear vision for the whole church.

## What progress is being made through our witnessing?

God is doing amazing things in our world. He's blasting open the Iron Curtain, raising up a movement of excited disciples ready to go anywhere and do anything, and motivating the development of some 2,000 plans among a host of groups who believe that every unreached people group can have a vital Christian church presence by the year 2000.

The Bible does not lead us to assume that all poverty, injustice, corruption, and pain will be conquered before Jesus returns. However, the Bible does tell us that all peoples will be represented among the

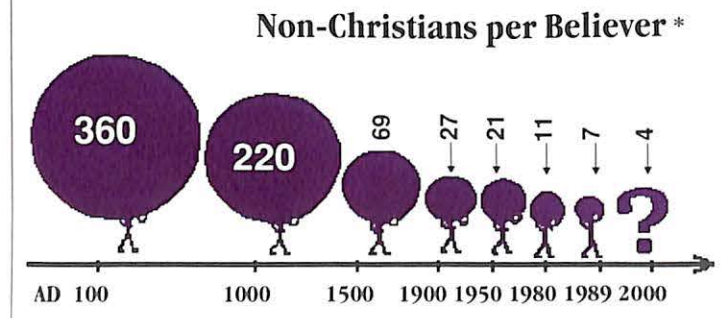
triumphant company of believers in that final moment of history (*Revelation 21:3*).

Some believe that we have the opportunity to bring more people into the Kingdom of God during the 90s than the church has been able to reach since its founding.

This will happen as we break out of the Christian culture idea that to join God's family is to become part of a respectable, privileged group. It's more like being born into a family business where everyone is naturally expected to take part in the father's business and work.

If you feel like you are in a dull, little corner of Christendom, it is critically important that you be aware of a few highlights of what God is doing around the globe today.

- 70,000 people become believers every day in the world.
- 3,500 new churches open



\* (Source: *Catch the Vision 2000* by Bill and Amy Stearns and Illustration from *Mission Frontiers*, Ralph D. Winter, U.S. Center for World Mission, Pasadena, CA.)

- every week worldwide.
- 28,000 become believers every day in the People's Republic of China. In 1950, when China closed to overseas missionaries, there were one million believers. Today, estimates indicate there are well over 60 million.
- 20,000 become believers every day in Africa; that continent was three percent Christian in 1900 and is more than forty percent Christian today.
- Korea had no Protestant church in 1900; it was deemed "impossible to penetrate." Today, Korea is thirty percent Christian with 7,000 churches in Seoul alone.
- Today in the Soviet Union, there are about 100 million Christians—about 36 percent of the population—after 70 years of oppression by communism.
- More Muslims in Iran have come to Christ since 1980 than in the previous 1,000 years combined. Before Khomeini's revolution in 1979, there were only about 2,000 Iranian believers. There are now more than 15,000.
- In A.D. 100, there were 360 non-Christians per true believer. Today, the ratio is less than seven to every believer, as the initiative of the Holy Spirit continues to outstrip our most optimistic plans!

God's plan of calling out a people for Himself began with the promise of Abraham in Genesis 12:2,3:

"I will bless you . . . and you shall be a blessing . . . and in you all the families of the earth shall be blessed."

Through Abraham's descendant Jesus Christ, God's blessing came to all people groups of the world.

## How will you and I be involved in witnessing to these final frontiers?

On the N.A.B. Conference level, we have targeted several unreached people groups in Nigeria, Cameroon, Brazil, Mexico, Philippines, Japan, Canada, and the U.S.A. Every

church and each of us, as individuals, need to make specific commitments in order to fulfill our part in cooperation with a host of other groups seeking the same objective to reach the unreached 12,000 people groups by the year 2000.

It can be done and must be done! Let us study to get the big picture, align our life-styles, pray for God's direction and enablement, give adequate time to write out specific action steps, and share our vision and testimony with others. "Where there is no vision, the people are restrained (lose focus)" (*Proverbs 29:18*). □

John Binder is Executive Director, N.A.B. Conference



Gary McCullough, assistant to the executive director, served as Triennial Conference manager for the 43rd Triennial Conference in Milwaukee, WI, in August 1991.



- 1853 First issue of *Der Sendbote des Evangeliums* published; K.A. Fleischmann, editor
- 1853 Four churches exist in Milwaukee, Watertown, Manitowoc, and Wayne Township, WI; William E. Grimm, founder
- 1854 Church Edifice Fund provides dollar for dollar; secured with at least a gift mortgage
- 1855 On July 4, August Rauschenbusch founds Pin Oak Baptist Church, Mt. Sterling, MO
- 1855 Philip Bickel is first Seminary graduate
- 1855 Hymnal, *Pilgerharfe*, published
- 1856 Annual Conference, Kitchener, ON
- 1857 1st Sunday school paper published: "The Cheerful Sower"

- 1858 August Rauschenbusch appointed first professor for German-speaking students, Rochester Theological Seminary
- 1858 Conference is divided into Eastern and Western Conferences
- 1859 1st Western Conference meets; approves publication, *Biene*; Philip Bickel, editor
- 1862 Annual Conference, Berlin, Canada
- 1865 1st Triennial Conference Wilmot, ON, Canada; K.A. Fleischmann, moderator
- 1865 Adopted rules for business
- 1865 Combined two publication societies into one: *Der Sendbote* official publication; Full-time editor and assistant elected

# VISION 2000 & YOU

## The Mission/ Purpose Statement

*The strategic focus of the North American Baptist Conference cooperative ministries in Vision 2000 is*

- to evangelize and disciple people globally
- by enhancing ministries in established churches
- and planting new churches that are committed to implement six Biblical Imperatives: to worship, grow, witness, serve, give, and care.

**V**ision 2000 grew out of the hearts of North American Baptist Conference people thinking together in regional and international task forces. They were asked

- What do you feel is important for your church and the Conference?
- What is needed in your church, family, and life?

These people said enthusiastically that the six Biblical Imperatives with specific and related goals—**Vision 2000**—should be our emphasis and direction to the year 2000. Delegates at the Triennial Conference in 1988 unanimously affirmed this.

**Vision 2000** gives local churches focus as they evaluate their ministry in light of the Biblical Imperatives. As church leaders and members meet in local church retreats, they evaluate their ministries and set goals. They evaluate their worship services and make changes. They schedule spiritual renewal retreats at a campground or some other quiet place.

Associations focus their themes on the Biblical Imperatives at their annual meetings: 1989 Called to Worship, 1990 Challenged to Grow, and in 1991 Commissioned to Witness.

Woven throughout this issue of the *Baptist Herald*, you

will see that the goals of the various Conference departments and schools focus on **Vision 2000** and six Biblical Imperatives—especially the imperative to witness.

The Conference engaged people prominent in their fields to serve as resource persons for the emphasis on each Biblical Imperative. Resource materials continue to be provided as each Biblical Imperative is launched. The emphases run in three-year cycles to give time for study, application, change, and growth in the life of individuals and congregations.

## Called to Worship 1989-91

The focus on the Biblical Imperative: Called to Worship, launched in 1989, brought a new awareness of the need for church leaders as well as individuals to plan and prepare for worship and to understand the elements of worship. As a result, more lay people are specifically involved in worship. Worship committees work with pastors to plan for meaningful worship, also.

Resources on worship are available. They include

- a bibliography on worship,
- a manual for worship committees, *The Worship Planning Committee*,

- book reviews,
- articles on worship printed in the *Baptist Herald* and "Link,"
- a diagnostic and consulting system on worship, *Worship Rediscovered*. This has been used in a number of churches with a good response. The resources suggested help to cultivate vital worship practices relating to current needs in the local church,
- and a video series, *Principles of Worship*, by Robert Webber of Wheaton College, used in seminars, workshops, or small study groups.

Nine regional workshops on worship involving 827 registrants and 154 churches were held in 1989.

## Challenged to Grow 1990-92

In 1990 the emphasis focused on the Biblical Imperative: Challenged to Grow. Ministers and lay people were involved in numerous spiritual renewal retreats across the Conference in 1990 and 1991. The Area Ministers take the lead by encouraging an openness to spiritual renewal in our Associations and local churches.

"A time of concentrated prayer and spiritual exercise is needed by many leaders in our

churches," says the Rev. Lewis Petrie, development director. "My involvement in the spiritual renewal retreats challenged and changed my devotional life. I continually sense the reality of God's presence, power, and purpose in my life to a greater degree."

Others have said: "*I came to this retreat with high expectations. I wanted to experience God and His love again anew. I wasn't disappointed.*"

*"The fellowship, the learning experience, the times of singing together and prayer . . . my heart was renewed. I've grown closer to God."*

*"I had heard about the spiritual disciplines, even studied some of them. This retreat gave me a chance to experience them firsthand."*

Believers continue to be challenged to evaluate their spiritual development and maturity and to focus on spiritual renewal.

- *Challenged to Grow*—a *Spiritual Renewal Retreat*, compiled by Lewis Petrie in conjunction with the Development Department staff, provided resource material for a 24-hour miniretreat. Focusing on the classical spiritual disciplines, the retreat provides an opportunity to meet with God in silence and solitude—to become spiritually renewed.
- Articles on the spiritual



disciplines, written by members of the Grow Task Force, were published in the *Baptist Herald* and "Link." Resources are available to assist the local churches in their study of the spiritual disciplines.

- Churches and individuals were encouraged to begin 1990 with a Week of Prayer, particularly interceding for church planters.

## Commissioned to Witness 1991-93

The Task Force for the Biblical Imperative: Commissioned to Witness met in July 1990 and planned resource materials for this Imperative. Dr. Don Posterski of Toronto, author of *Re-inventing Evangelism*, served as resource person.

Resource materials and

emphases include

- a Week of Prayer in January; during this time, believers were led from inner preparation to outward profession.
- Pastors being challenged to proclaim that all humanity is lost, and that it is imperative to be redeemed through Jesus Christ.
- Churches scheduling a "Witness Sunday" to call for recommitments to witness through daily Christian living.
- "Friendship Sunday"—a special day for *friends* of Jesus to reach out to others who need to become His *friends to invite them to church*. Resource ideas for "Friendship Sunday" are available.
- Conference pastors attending a Billy Graham "School of Evangelism" to encourage a concern for evangelism in the local church.

Challenged to develop a deeper prayer life and to pray for the salvation of people we know, we are encouraged to make witness and outreach a part of our life-style. It is imperative that we reach out with the love and concern of our Lord to those around us including those of various ethnic groups and cultures.

## Compelled to Serve 1992-94

Basic resource materials have been identified for this Imperative. The Task Force meets in the fall of 1991.

## Committed to Give 1993-95

The Development Department is in the process of providing resources for the Biblical Imperative: Committed to Give. It is hoped that this will encourage individuals and churches to practice Biblical principles of stewardship.

## Commanded to Care 1994-96

A task force on care will meet in 1993 to provide resource materials for this imperative.

What is your involvement—your commitment—to the mission of **Vision 2000**? How are the Biblical Imperatives becoming a more meaningful part of your life? □

1865

Approved local church delegate concept, Constitution and Bylaws

1865

Organized fund for aged ministers, ministers' widows, and orphans. Appointed committees to screen seminary applicants and graduates

1865

Approved gathering funds to found orphanage. Expressed joy that the Negroes received equal rights with the white citizens

1866

First Sunday in March designated as Missions Sunday with offering

1868

2nd Triennial Conference Cincinnati, OH; J.C. Haselhuhn, moderator

1869

Rochester Baptist Seminary moved to its new building on Alexander St.

1869

G. A. Schulte appointed Eastern Conference mission secretary

1870

Publication House moves to Cleveland, OH; legally incorporates

1871

3rd Triennial Conference New York City

1871

25 missionaries planting churches in North America; J.C. Haselhuhn appointed Western Conference mission secretary

1871

Children's Home established in St. Louis, MO

1872

Herman M. Schaeffer becomes second seminary professor for German students

1873

Offering for the German Baptists suffering in Russia

1874

4th Triennial Conference, Chicago, IL; G.A. Schulte, moderator

# Subpoenaed to Witness

by Benno Przybylski



**D**id you wake up on New Year's Day all excited about this year's Biblical Imperative? Had you already dreamed about witnessing? I didn't either . . .

Witnessing is not something that comes naturally to most Christians. We have to work at it.

Even the disciples were not

exempt from this problem. Their first recorded question to the resurrected Lord would indicate that witnessing did not top their list. Their prime concern was, "Lord, are you at this time going to restore the kingdom to Israel?" (Acts 1:6).

The disciples were interested in prophesy. They looked forward to the establishment of a kingdom where they could share in the mighty rule of God. *Power and prophecy were more appealing than witnessing.*

In 1991, we face a similar situation. We would rather be agents of God's power than His love. The recent Gulf War led to a great deal of interest in prophecy. Judging by the activity of many Christians, it would appear that the Great Commission is "Go into all the world and hold prophecy seminars."

While prophecy is important, we must never forget that **now** is the day of salvation. Indeed, Jesus responds to the prophetic enthusiasm of the disciples, "It is not for you to know the times or dates the Father has set by His own authority. But you will receive power when the Holy Spirit comes on you; and you will be my witnesses in Jerusalem, and in all Judea and Samaria and to the ends of the earth" (Acts 1:7-8).

For the body of Christ, the

Church, to fulfill its mandate in this world, a diversity of gifts is needed. God has equipped Christians for a variety of tasks. Yet both the Great Commission in Matthew 28: 16-20 and the teaching recorded in Acts 1:7-8 clearly indicate that Jesus' main concern before His ascension was that Christians be witnesses. Until Jesus comes again, we have the obligation **and, indeed, the privilege to be His witnesses.**

**W**hat does being a true witness entail? The New Testament focuses on two major issues. The Greek word translated as witness/witnessing comes out of the legal context of the courtroom. In court, witnesses provide testimony. In fact, the entire judicial process was and still is based on the existence of witnesses. Circumstantial evidence is always suspect. When witnesses lie, justice breaks down.

In the use of its witnessing terminology, the New Testament has adopted very powerful legal language. Saying that Christians are to be witnesses signifies that we must give testimony convincing the world that the gospel is true. There is a trial between Christ and the world, and Christians carry the responsibility of being the witnesses.

What makes witnesses

effective? Their words carry a lot of weight. Fortunately, we have the Bible. It spells out everything needed for faith and practice. Consequently, we should study it and make it our own. Yet, although as a New Testament professor, I hate to admit it, finding the right words is not the hardest part of witnessing.

Jesus said, "But when they arrest you, do not worry about what to say or how to say it. At that time you will be given what to say, for it will not be you speaking, but the Spirit of your Father speaking through you" (Matthew 10:19-20).

Is the witness simply evaluated by his or her words? No, in a court of law, the jury does not base its decision simply on what it hears. The jury assesses the integrity of the witness. Indeed, primarily on the basis of the latter, the jury accepts or rejects the testimony. Similarly, the world generally judges the gospel by the integrity we project as witnesses.

**T**he legal connotation in no way exhausts the rich meaning of the New Testament concept of witness. The Greek term carries not only the meaning of witness but also that of martyr. In the early Church, a close relationship developed between witnessing and suffering. The highest form of

witnessing was to be a martyr.

The idea of suffering is based firmly on the teaching of Jesus. For example, in sending out the 12 disciples on the missionary journey, Jesus took for granted that suffering would be involved (Matthew 10:21-23).

Jesus' prediction was confirmed by history. The Church grew by the blood of the martyrs. No more effective method of evangelism has ever been devised. We hear of incidents where Christians would run to meet their Roman persecutors. Being a martyr became so popular that church leaders reluctantly advised that persons were only genuine martyrs if they first tried to hide! This is hard for us to grasp when inconvenient parking or stale donuts exceed the limits of our willingness to suffer at church.

Why do the cults so often find it easy to attract members? It is usually not because of their teaching but their example of commitment. Outsiders are impressed by the fact that cult members show a willingness to endure ridicule and various forms of deprivation.

We must not fall into the trap of insisting that only those who suffer are real Christians. God works in different ways with His people. Yet, a true witness of the gospel is one

who in the power of the Spirit demonstrates harmony between word and deed and backs all of this up by the willingness to suffer when the need arises. And how do we put all of this into practice? A look at Jesus provides the clue. What was one of the crucial differences between Jesus and the Pharisees? The Pharisees wanted sinners to come to them; Jesus went to sinners.

Why do we dislike the Pharisees so much? Is it because we are so much like them? We wait for sinners, or better said, respectable sinners to come to us.

But just going is not enough. How should we go? How can we demonstrate that we really care about the unsaved? Jesus did it by breaking down artificial barriers. While others always circum-vented Samaria, Jesus travelled straight through. This way, the Samaritans saw that Jesus cared. While other teachers avoided public contact with women, Jesus made sure He talked with them. This way women experienced that He cared.

How can we, as North American Baptists, show that we care about the people in our community? I have the sneaking suspicion that we all know what to do. In the power of the Holy Spirit, let's do it! □



Dr. Benno Przybylski is Professor of New Testament at Edmonton Baptist Seminary, Edmonton, AB.

**Jesus went to real sinners. If we want to be effective witnesses, let's not waste any more time on devising schemes on how to attract sinners to come to us. Let's be revolutionary. Let's go to sinners!**

1874 First Sunday school hymnbook published: **Little Songbird**

1876 54 home missionaries supported

1877 5th Triennial Conference, Buffalo, NY; J.C. Haselhuhn, moderator

1878 Building approved by Publication Society

1880 6th Triennial Conference, St. Louis, MO; H.M. Schaeffer, moderator

1880 Western Conference divided into three sections: Central, Northwestern, and Southeastern

1882 1st missionary overseas: Emma Rauschenbusch appointed to India

1883 7th Triennial Conference, Cleveland, OH; E.J. Deckmann, moderator

1883 General Missionary Society approved; elected General Missionary Committee; Secretary, J.C. Grimmell; Treasurer, G.A. Schulte; 10,000 members

1884 49 home missionaries supported; \$12,012.85 budget; 1,000 baptisms

1884 Jacob S. Gubelmann, 3rd professor at Seminary

1885 **Die Glaubensharfe** hymnal published; 49 home mission fields; two missionaries in India; missionaries in Europe

1885 Miss Clara Hess appointed to Swatow, China

1886 8th Triennial Conference Detroit, MI; Der Jugend Society (young people's) initiated

# Church Growth Ministries

*Witnessing in North America*

**Accelerate the planting of churches in North America**



**T**he Biblical Imperative, Commissioned to Witness, gives each of us the opportunity to leave a treasured legacy. This calls for pro-active involvement. To reach the world for Christ by the year 2000, we cannot wait until tomorrow or leave it to someone else. For the someone else is you and I, and the tomorrow is now.

Since the early 1800s, when our first churches were planted, the Conference has been involved in starting new churches.

"Church Planting or Extension Committees and the Church Growth Department of the Conference look for grow-

ing population areas where a witness for Christ is needed," says Bernard Fritzke, associate director. "After a careful study of the area confirms the need, we send a planter/pastor to begin a new church."

## Why plant churches?

- Some churches die. Church growth experts tell us that the average life of a church is 80 years. In 1900, there were 27 churches for every 10,000 people in the U.S.A., and in 1985, only 12.
- As the population increases and cities grow, someone needs to bring the gospel to these new people. New mission opportunities come as various ethnic groups continue to immigrate to North America.
- It is believed that in Canada and the U.S.A. that 70 percent or more of the population is not meaningfully

related to any church. North America is a mission field!

- Our Conference statistics indicate that, for the present, new churches are doing the most efficient job of reaching the unreached for Christ.
- Since the N.A.B. Conference began a concerted church planting effort in 1952, we have planted more than 200 new congregations. Of the 60,168 church members listed in our 1991 N.A.B. Directory, 24,599 are in those churches received into the Conference since 1952. This is 41 percent of the total.

"As our Conference grows stronger at home, we can advance more aggressively for Christ through overseas missions," says Fritzke. "Church planting in North America is a very vital part of fulfilling Christ's Great Commission to reach a lost world."

The New Churches . . . New Life campaign, launched at the



Triennial Conference in 1988, helped raise people's awareness of the need to plant more churches in North America.

## What Is Happening Now?

Not only are we starting Caucasian congregations but also intercultural churches as well.

Intercultural church planting ministries include one church in Downsville, ON; three churches in the Philadelphia, PA, area; Spanish work among Mexican-Americans in the Rio Grande Valley in Texas; an English ministry among Spanish-surnamed people in the San Luis Valley in Colorado; and an East Asian church in Anaheim, CA.

Presently, the Church Growth Ministries Department assists 34 new churches in Canada and the U.S.A. More

than 2,200 people worship in these churches each Sunday.

In 1990, church planter/pastors reported 187 received Christ as Savior, 577 rededicated their lives to Christ, and 156 gave witness of their new life in Christ through baptism.

In 1990, churches receiving financial assistance from the Conference contributed \$71,693 for N.A.B. Conference and Association missions and ministries.

Because of contributions to start new churches through the Established Ministries as well as the New Churches . . . New Life campaign, our Conference planted ten new churches in 1989 and the following nine in 1990:

- Valley Christian Fellowship, Temecula, CA, Mike McNeff, pastor
- All Nations Baptist Church, Downsville, ON, Kenrick Sharpe, pastor

- Central Valley Baptist Church, Newman, CA, Dennis Shippy, pastor
- NW Community Baptist Church, Vancouver, WA, Byron Brodehl, pastor
- Wascana Baptist Church, Regina, SK, Harvey Kirsch, pastor
- Faith Baptist Church, Mechanicsburg, PA, Denis Friederich, pastor
- Bible Baptist Fellowship Church, Camden, NJ, Joseph Lewis, pastor
- Christian Compassion Church, Philadelphia, PA, Samuel Slaffey, pastor
- International City Community Church, Philadelphia, PA, William T. Grier, Jr., pastor.

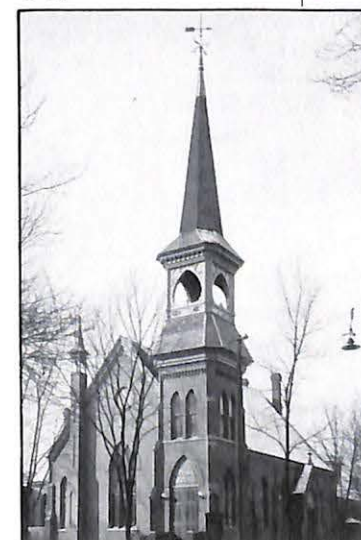
We have requests to start 10 new churches in 1991. Because of budget restraints, only seven can be planted. As of July 1991, the following churches were planted:

- Stony Creek Church, Utica,

- MI, Randy Rheume, pastor
- East West Community Church, Anaheim, CA, Jawahar Gnaniah, pastor
- Plymouth, MN, Rev. Leigh Harrison, pastor
- New Life Community Church, Lloydminster, AB, Martin Wagantall, pastor

Two projects disbanded in 1990: Faith Baptist Church, Mississauga, ON, and Faith Baptist Fellowship, Medicine Hat, AB; and one in 1991: Oceanview Baptist Church, White Rock, BC.

- In 1990, four churches became self-supporting:
- Shady Grove Baptist Church, Gaithersburg, MD, Jim Arends, pastor
- Cornerstone Baptist Church, Carol Stream, IL, Tim Walker, pastor
- Cross Timbers Baptist Church, Flower Mound, TX, Ron Presley, pastor
- Valley Community Baptist



**1886**  
29 new churches, 28 new buildings, 55 home missionaries, 2,191 members added, 13,000 members, 161 churches

**1886**  
Support missionaries to Germany, East Prussia, Russia, and Hungary. The Jacob Heinrichs to India

**1887**  
Betha Wepf to Burma and Johanna Schuff to India

**1888**  
60 missionaries; 170 German churches; Preparatory department added to Seminary (five year course total)

**1890**  
Both home and overseas missions fairly well organized

**1891**  
Appointed The Karl Roths, missionaries to Brazil; August Steffens, first missionary from America to Cameroon; Support mission pastors in Germany, Bohemia, Switzerland, Russia; G.A. Schulte elected General Missionary Secretary

**1899**  
Carl J. Bender appointed missionary to Cameroon

**1901**  
13th Triennial Conference Berlin, ON

**1902**  
Manitoba, Saskatchewan, and Alberta form Northern Conference; Gottlob Fetzter becomes editor Der Sendbote

**1904**  
14th Triennial Conference Chicago, IL, 548 attend

**1905**  
Conference joins the Baptist World Alliance

**1906**  
Philadelphia Home for Aged established

**1907**  
15th Triennial Conference Buffalo, NY, L. Kaiser, moderator

**1910**  
16th Triennial Conference Milwaukee, WI, L. Kaiser, moderator

**1911**  
H. P. Donner, manager, Publications Society

Church, Tracy, CA, Dennis Dearmin, pastor

During 1991, eight more churches will become self-supporting:

- Coppell Fellowship Church, Coppell, TX, Daniel Heringer, pastor
- Christ Community Baptist Church, Puyallup, WA, Gordon Bauslaugh, pastor
- South Austin Fellowship Church, Austin, TX, Gordon Stork, pastor
- Pacific Bible Church, Dana Point, CA, Keith McKinney, pastor
- Hope Fellowship Church, Kansas City, MO, Dennis Dewey, pastor
- Antelope Springs Baptist Church, Sacramento, CA, Stephen Kellar, pastor
- Walnut Grove Baptist Church, Langley, BC, James Calamunce, pastor
- Vaca Valley Baptist Church, Vacaville, CA, David Wesner, pastor

"Anyone who does planting looks for fruit from their labor," says Bob Walther, associate director. "You have been faithful in planting new churches, and here is the fruit. Our focus has been to plant churches that will be strong and self-supporting as soon as possible. Our greater desire is that these churches will bear fruit themselves."

• Steady growth has been the

trademark of West Sound Community Church in Silverdale, WA; 128 attended their first anniversary service in 1991. The pastor, Rainer Kunz, is enthusiastic about the new families attending weekly.



- Associations are the key to helping churches become stronger. Visibility was needed for the new church in Penticton, BC. The British Columbia Association met the need by helping to construct a church building for Calvary Baptist Church. Attendance has been steadily growing.
- Worship space was the challenge for two churches in Kansas City, MO, and Coppell, TX. Both churches that had attendance well below the 100 mark saw

their attendance rise well over 100. This took place as both churches stepped out in faith and developed a second Sunday morning worship service.

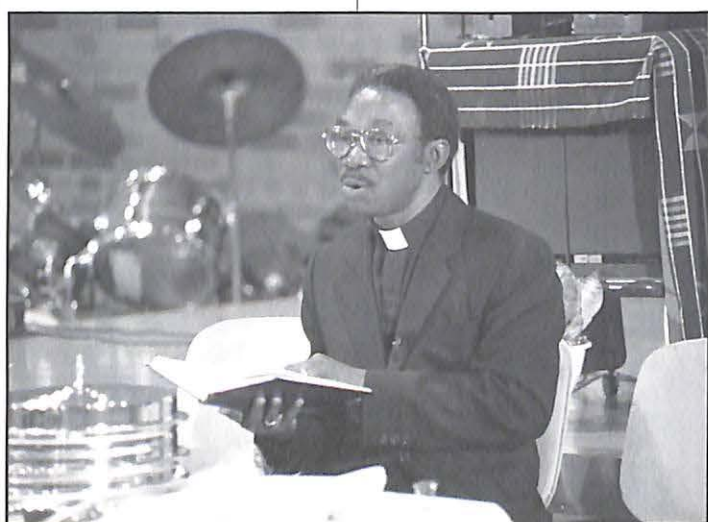
- In Shelby Township, MI, a new church is being

daughtered by Fellowship Bible Church, a church planting project itself. This group sent 16 people as the core group for Stony Creek Church in Utica. Now there is a vibrant, new church with its first public service scheduled in September 1991. Be praying for another fruitbearing church plant.

"Fruit comes as the result of witnessing through church planting. Thank you for your faithfulness in being a part of these new opportunities of outreach," says Walther.

### The WMF Vision

As early as 1860, women were "permitted" and encouraged to begin mission societies. These women



officially organized on the Conference level at the Triennial Conference in Buffalo, NY, in 1907.

The Women's Missionary Fellowship organized to reach women in the churches, neighborhoods, nation, and the world for Jesus Christ (Acts 1:8).

The purpose of the WMF is

- To unite all the women of our churches in Christian fellowship.
- To provide opportunities for Christian growth through Bible study and prayer.
- To provide an outreach ministry at home and overseas.
- During the past triennium, the women gave \$866,833 toward the \$950,000 goal for Conference missions and ministries. Beginning with 1991, rather than having a triennial goal, the women have adopted an annual

budget goal of \$245,708.

The WMF strongly affirms and actively implements the Biblical Imperatives of Vision 2000 through its ministries and programming.

"Our rich heritage is a torch which has been passed on to the church of the 1990s," says Linda (Ebel) Weber, women's ministries director. "We cannot afford to be out of step with the



The Rev. Bernard Fritzsche, associate director/church planting (l. to r.); Mrs. Linda Weber, assistant director/women's ministries; Dr. Ron Mayforth, acting director; and the Rev. Robert Walther, associate director/church planting—field operations, serve as executive staff of the Church Growth Ministries Department.

needs of our world as seen through the eyes of Jesus."

### Youth Ministries—the Vision

"A new movement for youth ministry is being felt by many in the N.A.B. Conference," says Dan Hamil, part-time Conference youth consultant. Three regional Youth Ministry Task Forces met in 1990 and discussed ways in which the Conference, Associations, and churches could reach and disciple youth for Jesus Christ. To find ways to better facilitate the spiritual growth of our youth, the needs of the 12,000 youth attending our churches and youth workers were discussed.

The focus of the Conference youth division is two-fold:

- to train youth workers to reach students and

- to send ministry teams of youth to disciple young people for Jesus Christ.

N.A.B. Conference youth have an opportunity to serve through a new student summer team discipleship/ministry, COMPASS. It provides the leadership/teaching core for a vacation Bible school, with the host church providing the necessary support staff—an exciting combination.

A music/drama team, NEW DAY, serves in three-month-long fall tours.

The Church Growth Ministries Department supports all of the Biblical Imperatives but especially the imperative to witness. Let us be sensitive to the people in our communities and their needs. May we be faithful to Christ's vision as we seek to reach people for Christ. □

1913

17th Triennial Conference Madison, SD, L. Kaiser, moderator

1913

1st meeting held west of Mississippi; Supported 28 mission workers in Europe

1914

Portland Home for Aged established; William Kuhn appointed General Missionary field secretary

1916

18th Triennial Conference Detroit, MI; Pastor's pension fund becomes a reality

1916

Children's Home moved to St. Joseph, MI; William Kuhn becomes General Missionary Secretary succeeding G. A. Schulte

1919

19th Triennial Conference Chicago, IL. F.A. Bledow argues that Conference must turn to English language; Voted to move the General Missionary Society west to Forest Park, IL

1920

German Baptists became independent of support by the American Baptist Home Mission Society

1920

The Baptist Union of Western Canada; Laymen urged adopting a unified budget system and Finance Committee

1922

20th Triennial Conference St. Paul, MN, \$1,056,273 rec'd million dollar offering

1922

Plans drawn for European mission work; Baptist Young Peoples and Sunday School Workers' Union organized

1923

Young people's organization formed with their own periodical: The Baptist Herald, A. P. Mihm, secretary/editor

1923

A. P. Mihm, secretary and editor of their publication

1924

The German Baptists of North America by Albert J. Ramaker published

# Area Ministries

Area ministers enhance the ministries of the local church

*We need to send missionaries around the world. We also need missionaries around the corners —missionaries to North America*

**W**e often think about, pray for, and give to support missionaries to overseas lands. When we give to N.A.B. Conference ministries, we also support home missionaries in North America.

However, we live in lands with shrinking Christian populations. In Canada, in 1946, 67 percent of the population attended some church; in 1986, only 35 percent attended church. If the trend continues, only 15 percent will attend by 2025. Only about seven percent of the population claim to be evangelical Christians.

In the U.S.A., 70 percent claim some membership in a church, but only 40 percent attend anywhere. Sunday school attendance has declined 37 percent in the last 17 years.

Moreover, many of those who do attend church are also

seeking high tech gods: the yellow pages, the department store, current fads, quick and easy relief; "Oscar gods": the best show for a slight admission fee; or passage gods available on demand when people are born, married, or die.

North America—experiencing rapid change, moral flux, financial shocks, institutional corruption, and family breakdown—needs home missionaries. Ten of these are Area Ministers. You can know, remember, and support them with the following symbols:

**A Candle**—In this year of the **Vision 2000** Witness Imperative, to lead others toward Christ through word and deed.

**As a Staff**—To be pastors to our N.A.B. Conference pastors . . . to assist them at times of induction, beginning, ordination, transition, crises, daily

ministry, and retirement.

**A Shovel**—To help our Associations to reach North America with the Gospel through Church Planting.

**An Exercise Machine**—To help churches evaluate and improve their fitness, health, and growth so they continue to be reproductive.

**A Compass**—To give guidance to pastors and churches in times of pastoral change, church crisis, long-range planning, and ministry change (location, focus, methods).

**A Video-Recorder**—To help us know about the rest of us—our needs, potentials, opportunities, problems, concerns, priorities, and dreams; to help us remember and profit by our history.

**A Story Book**—To retell your growth stories to others to stimulate fellowship and encouragement. To tell us what we are doing together in education, overseas missions, and missions and ministries in North America. To help us keep alive in our hearts Christ's mission to the whole world.

**A Megaphone**—To serve as cheerleaders, to encourage, and to affirm.

**A Knitting Needle**—Used by the Holy Spirit to help knit us together into a many colored fellowship—strong, attractive, and effective.

Remember the Area Ministers in your prayers, support, and creative love. It is my joy to serve Christ with them. □

—Ron Mayforth  
area ministries director



Missionaries around the corners: Dr. Ronald Mayforth, area ministries director (standing l. to r.); Rev. Jacob Ehman, Upper Midwest area; Rev. John Ziegler, Eastern area; Rev. Edmond Hohn, British Columbia area; Rev. Jake Leverette, Manitoba/Saskatchewan area; Dr. Kenneth Fischer, California area; Dr. Charles Littman, Alberta area; (front row l. to r.): Rev. Ralph Cooke, North Central area; Rev. Milton Zeeb, South Central area; Rev. LeRoy Schauer, Northwest area; and Rev. William Taft, Great Lakes area.

1924

Carl Fuellbrandt appointed director of Danubian work in southeastern Europe

1925

21st Triennial Conference Pittsburgh, PA, H. von Berge, moderator

1927

Ausgewählte Lieder des Evangeliums published; New seminary building constructed, Rochester, NY

1928

22nd Triennial Conference, Chicago, IL, H. von Berge, moderator

1931

23rd Triennial Conference Detroit, MI; GMS observes 50 years Paul Getauer appointed first missionary to Cameroon by GMS

1934

24th Triennial Conference Milwaukee, WI William Kuhn elected executive secretary and GMS secretary

1934

William F. Grosser, layman becomes Conference treasurer

**T**hese words of Jesus in Matthew 25:21, might have been said to people who have investments in C.E.I.F. — investors who have used the treasures God has provided them to help spread the gospel of our Lord Jesus Christ. By investing in C.E.I.F., investors help new N.A.B. Conference churches build buildings and older churches remodel, expand, and refinance, thereby, furthering the kingdom of God.

In 1972, the General Council of the Conference established the Church Extension Investors Fund to provide an ongoing, stable loan source for the Conference church building and expansion projects.

C.E.I.F. has operated in the United States through an

affiliated corporation since 1973 and in Canada through an affiliated company since 1977.

C.E.I.F. makes loans to start, remodel, and expand churches by issuing certificates of deposits and IRAs to N.A.B. Conference investors who are interested in earning a "Double Dividend." In addition to earning a market rate of interest, investors help spread the Gospel and enhance the kingdom of God. Currently, C.E.I.F. has more than 1,800 investors who have helped to provide loans of \$2,135,008 to nine N.A.B. Conference churches in 1990. C.E.I.F., also, has 120 church loans with a balance of \$12,994,215.

The Rev. Gordon Denison of Sturgeon Valley Baptist Church,

St. Albert, AB, talks about the building of their church.

"We now look back on those early years and acknowledge what God has wrought. We invite you, as investors, to reflect on your double dividends. The second dividend may well be the more rewarding: People are finding their Savior. Adults and young people are following their Lord in baptism. Individuals and families are seeking areas of service. As we gather, we thank God for C.E.I.F. investors who help."

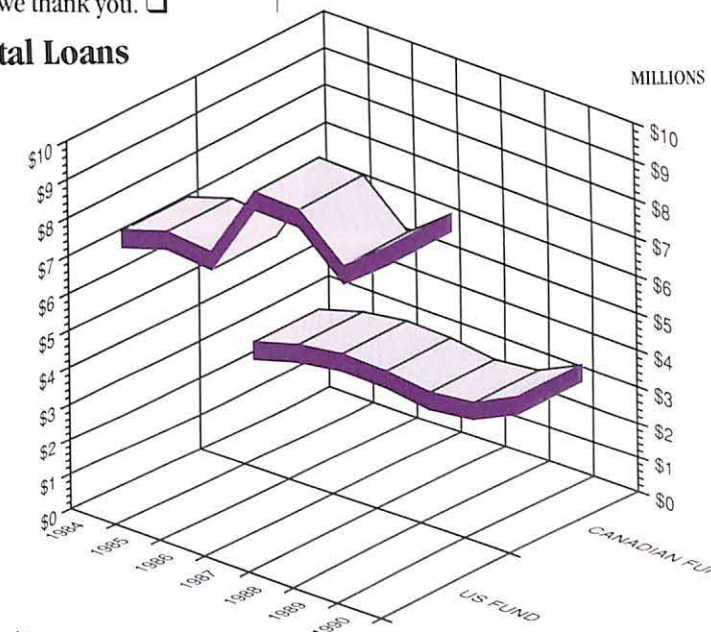
Do you know where your money is? If you and/or your church have investments with Church Extension Investors Fund, we thank you. □

**"You have been faithful . . . Come and share your Master's happiness"**



Robert Mayforth, C.E.I.F. director (left), and Randy Coffland, assistant director of loans, invite you to contact them concerning investing in C.E.I.F.

Total Loans



	1984	1985	1986	1987	1988	1989	1990
Canadian Fund	\$2.53	\$2.89	\$3.07	\$3.03	\$2.87	\$3.01	\$3.59
US Fund	\$7.25	\$7.66	\$7.57	\$9.58	\$9.56	\$8.50	\$9.41

1934

General Council established, all societies represented; Samuel Blum, editor Der Sendbote

1934

Seminary changes name to German Baptist Seminary

1934

Established Baptist Residence for Women, NYC

1935

Martin Leuschner becomes secretary of YP&SSWU and editor of the youth publication, **Baptist Herald**

1935

New church erected in Vancouver, BC, with spectacular growth due to immigration

1936

Medical missions begin in Cameroon with Missionary Edith Koppin

1937

25th Triennial Conference Portland, OR, business conducted largely in English; O.E. Krueger, moderator; 858 represent 126 churches

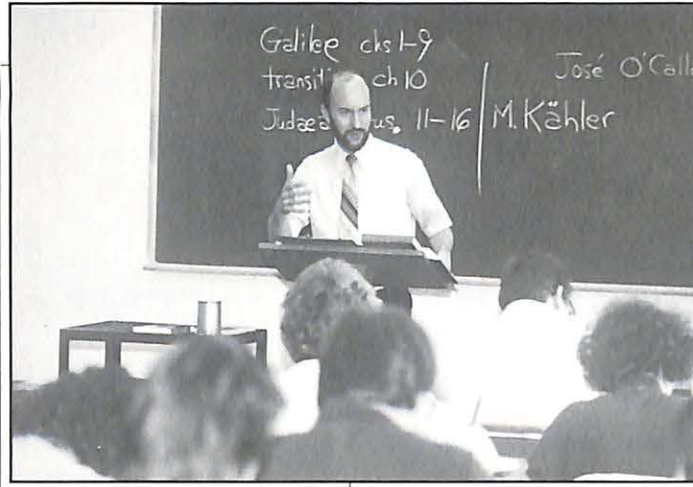
1937

UMU Scholarship fund established



# North American Baptist Seminary

*preparing leaders to be effective witnesses*



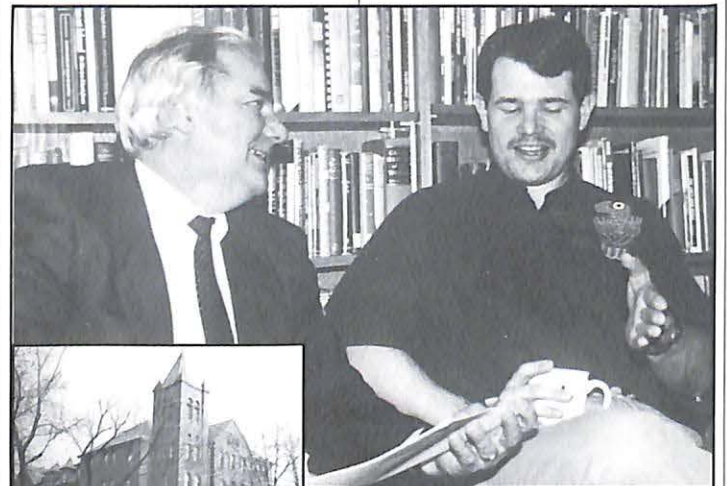
To prepare students to effectively witness in their respective ministries, numerous courses are taught on evangelism, witnessing, and other New Testament topics.

Students gather in the Koinonia Center to discuss what they have learned in the classroom.

The Word of God is the foundation for the training received at NABS.



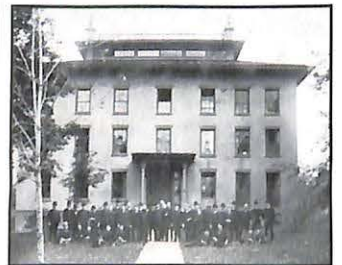
Professors take time to mentor students and encourage them in their preparation to be effective witnesses.



Seminary classes were held at 246 Alexander Street, Rochester, NY, from 1890-1949.

At the first Conference in 1851, the participants agreed there was an urgent need to train ministers for the new churches in North America. Classes began in 1858 in Rochester, NY.

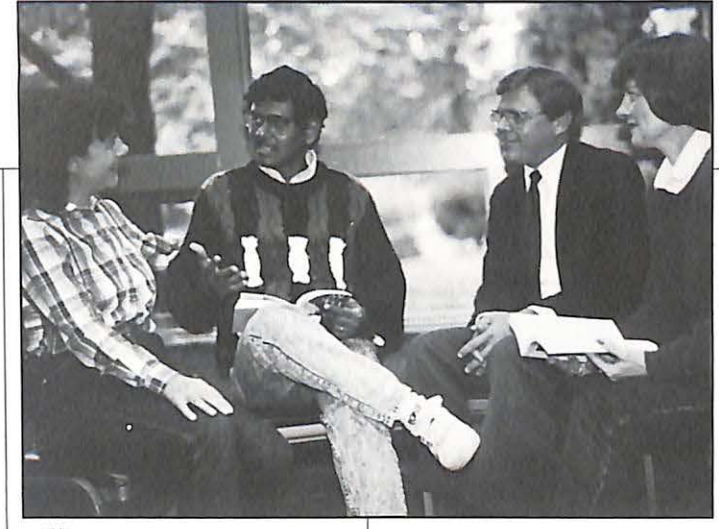
"The Student Home" acted as both dormitory and classroom for the students from 1874-1890.



- 1938**  
George and Louise Dunger, first missionaries appointed to Warwar, Cameroon (became Mambilla Baptist Mission, Nigeria)
- 1938**  
Laura Reddig appointed to Cameroon
- 1940**  
26th Triennial Conference Burlington, IA, 1,154 attend; conducted totally in English
- 1940**  
Promotional secretary approved: Assaf Husmann elected; \$100,000 Centenary Offering goal
- 1940**  
Seminary becomes Rochester Baptist Seminary; Albert Bretschneider, president
- 1940**  
E. P. Wahl founds Christian Training Institute, Edmonton, AB
- 1940**  
Club plan for **Baptist Herald** and **Der Sendbote**; Bismarck retirement home established



President Charles Hiatt tells of his own conversion experience during the fall spiritual renewal retreat.

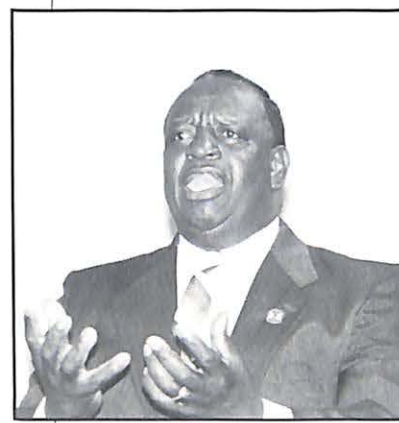


William Grier, N.A.B. Conference church planter in Philadelphia, speaks to the NABS community about witnessing in the urban centers of the world.

Students take part in spiritual development groups that provide encouragement and accountability.



Allan Kostboth, NABS director of recruitment, tells students and staff about his personal witnessing experiences.



Husbands and wives prepare to minister side-by-side and fulfill their calling to ministry.



Diligent study is vital preparation for ministry.

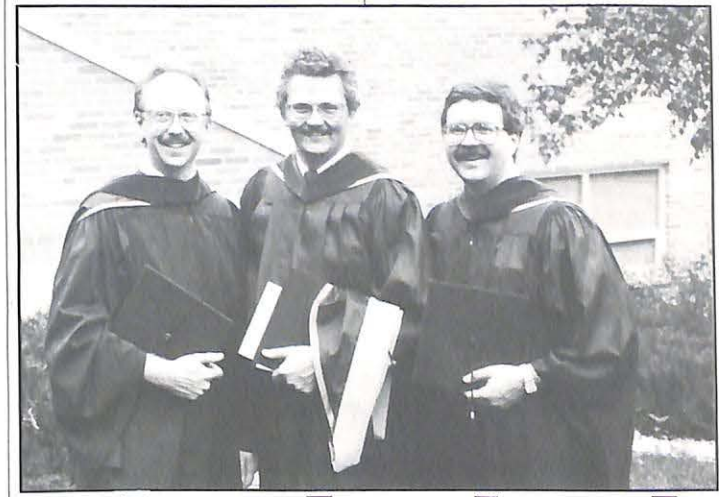
Students come to NABS with a call to ministry and leave prepared to witness and serve. During the 1990-1991 academic year; 378 persons studied at this Seminary.



The Seminary relocated to Sioux Falls, SD, in 1949.



Students from around the world like, Zornitsa Igoff, Bulgaria, and Peter Evande, Cameroon, come to NABS to prepare to be more effective witnesses when they return to their country.



- 1941**  
W.M.U. Day of Prayer material published in English in **Baptist Herald**
- 1942**  
GMS changes name to North American Baptist General Missionary Society
- 1943**  
266 churches 38,312 members
- 1944**  
27th Triennial Conference Milwaukee, WI; O. E. Krueger, J.C. Gunst elected first full-time secretary, YP & SSWU
- 1944**  
9 missionaries commissioned; H.G. Dymmel elected Home Missionary Secretary
- 1944**  
George A. Lang president N.A.B. Seminary
- 1944**  
**Baptist Herald** official denominational publication
- 1944**  
Assume administration of Baptist mission in Cameroon



**British Columbia Association**  
 24 churches  
 4,187 members (+51)  
 2,126 av. S.S. attendance  
 4,250 av. Sun. worship attendance  
 124 baptisms

**Alberta Association**  
 49 churches  
 1 CPP church  
 7,871 members (+157)  
 4,128 av. S.S. attendance  
 7,391 av. Sun. worship attendance  
 228 baptisms  
 1 new church start 1991

**Saskatchewan Association**  
 14 churches  
 1,334 members (-13)  
 832 av. S.S. attendance  
 1,370 av. Sun. worship attendance  
 42 baptisms  
 1 new church start 1990

**Manitoba Association**  
 16 churches  
 2 CPP churches  
 2,433 members (-64)  
 1,510 av. S.S. attendance  
 2,573 av. Sun. worship attendance  
 51 baptisms

**Pacific Northwest Association**  
 15 churches  
 1,975 members (+87)  
 1,135 av. S.S. attendance  
 1,643 av. Sun. worship attendance  
 87 baptisms

**Central Dakota/Montana Association**  
 26 churches  
 3,362 members (+31)  
 1,766 av. S.S. attendance  
 2,682 av. Sun. worship attendance  
 64 baptisms

**Northern Dakota Association**  
 16 churches  
 2,137 members (-24)  
 1,075 av. S.S. attendance  
 1,785 av. Sun. worship attendance  
 38 baptisms

**Minnesota/Lacrosse Association**  
 11 churches  
 1,544 members (-39)  
 639 av. S.S. attendance  
 1,108 av. Sun. worship attendance  
 46 baptisms  
 1 new church start 1991

**Great Lakes Association**  
 29 churches  
 2 CPP churches  
 7,108 members (+11)  
 3,420 av. S.S. attendance  
 5,441 av. Sun. worship attendance  
 214 baptisms  
 1 new church start 1991

**Eastern Association**  
 25 churches  
 3,608 members (+152)  
 1,865 av. S.S. attendance  
 2,944 av. Sun. worship attendance  
 120 baptisms  
 1 new church start 1990

**Northern California Association**  
 15 churches  
 4 CPP churches  
 6,188 members (-87)  
 4,168 av. S.S. attendance  
 5,753 av. Sun. worship attendance  
 250 baptisms  
 1 new church start 1990

**Central Pacific Association**  
 13 churches  
 1 CPP church  
 2,284 members (-39)  
 1,317 av. S.S. attendance  
 1,956 av. Sun. worship attendance  
 54 baptisms  
 1 new church start 1990

**South Dakota/Wyoming Association**  
 17 churches  
 2,717 members (+154)  
 1,517 av. S.S. attendance  
 2,185 av. Sun. worship attendance  
 91 baptisms

**Wisconsin Association**  
 12 churches  
 1 CPP church  
 2,469 members (-12)  
 1,083 av. S.S. attendance  
 2,294 av. Sun. worship attendance  
 44 baptisms

**Iowa Association**  
 15 churches  
 1 CPP church  
 2,227 members (-13)  
 931 av. S.S. attendance  
 1,631 av. Sun. worship attendance  
 46 baptisms

**Illinois Association**  
 16 churches  
 1,993 members (-11)  
 995 av. S.S. attendance  
 1,434 av. Sun. worship attendance  
 58 baptisms

**Atlantic Association**  
 14 churches  
 4 CPP churches  
 1,514 members (-2)  
 762 av. S.S. attendance  
 1,228 av. Sun. worship attendance  
 60 baptisms  
 1 new church start 1990

**Southern California Association**  
 10 churches  
 4 CPP churches  
 1,658 members (-17)  
 1,511 av. S.S. attendance  
 2,000 av. Sun. worship attendance  
 47 baptisms  
 1 new church start 1990  
 1 new church start 1991

**Southwestern Association**  
 25 churches  
 2,295 members (-50)  
 1,357 av. S.S. attendance  
 1,628 av. Sun. worship attendance  
 54 baptisms  
 1 new church start 1991

**Southern Association**  
 15 churches  
 1,329 members (+38)  
 933 av. S.S. attendance  
 1,284 av. Sun. worship attendance  
 39 baptisms

**Miscellaneous Churches**  
 1 church  
 85 members (-160)  
 29 av. S.S. attendance  
 82 av. Sun. worship attendance  
 2 baptisms

**1990 Statistics**  
 378 churches (plus 23 church planting projects waiting recognition as churches)  
 9 new church starts  
 60,318 members  
 52,662 av. Sunday worship attendance (reporting incomplete)  
 2,200 av. church planting attendance

**1990 Gains**  
 1,840 baptisms (156 of these in church planting projects)  
 1,483 gains through transfer of letter  
 1,752 gains by Christian experience

**1990 Losses**  
 522 through deaths  
 3,090 removed from rolls  
 129 churches reported no baptisms

# NORTH AMERICAN BAPTIST CONFERENCE

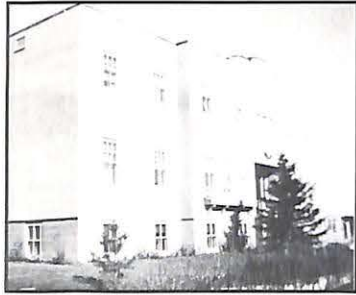
## Churches in Canada and the U.S.A.

*This map reflects the number of churches, membership, average Sunday school and worship attendance, and number of church starts in each Association in 1990 (- under / + over 1989)*

*\* Church planting projects (CPP) are those churches not received into the association as of December 31, 1990.*

# North American Baptist College and Edmonton Baptist Seminary

*preparing leaders to  
be effective witnesses*



**"Commissioned to Witness' spurs us on to ever expanding efforts. The past has given us a good foundation. The present challenges us as never before. And the future beckons us to reach for a greater tomorrow."**

—Paul Siewert, president



**W**itnessing has been referred to as "sharing your experience with God." When God chose the nation of Israel as His people, He commissioned them to be a witness to their world. Jesus left the same challenge to the believers of His day. They were to share the good news of how God had come to them in the incarnation—Jesus! Jesus' coming provided a special way to connect with God.

Faith in Jesus provides a living connection with God. And in this connection, there is the guarantee of heaven. That's good news! And that's why witnessing, sharing this

message, is an imperative for us at North American Baptist College/Edmonton Baptist Seminary in Edmonton, Alberta.

### Witnessing— Past Reality

In the early years of the century, as North American Baptist Conference churches spread and grew across Canada, there emerged the desire to have a school that would train lay leaders for the Church and its witness across the new land. Out of this desire came the Christian Training Institute, the forerunner of the North American Baptist College and Edmonton Baptist

Seminary.

The pledge of CTI was to instill in students the Biblical knowledge and leadership commitment needed for dynamic witnessing for Christ in the Church and the world.

The first graduates of CTI in 1942 were commissioned to witness. And they were faithful! Some went to the mission field and other full-time ministries; the rest became effective local church servants, teachers, and leaders. Charles Fleck, the only one able to be at the NABC/EBS Commencement Service this year, received a special recognition plaque as one of the first graduates.



### Witnessing— Present Reality

The campus of NABC/EBS is not only a place of academics but a place of witnessing and commissioning for witnessing.

All through the school year, students are encouraged to interact in such a way that Christian growth is fostered. This leads to ministries beyond the campus.

God honors many styles of witnessing. Peter in Acts 2 wit-

nessed by confronting the people with the need of Christ in their life. The Apostle Paul on Mars Hill witnessed by "reasoning" with his audience. Aquila and Priscilla, in Acts 18, witnessed through their hospitality. The Samaritan woman witnessed by simply inviting people to the place where they would hear the Gospel message.

The witnessing readily encouraged and taught on the campus of NABC/EBS has versatility and practicality.



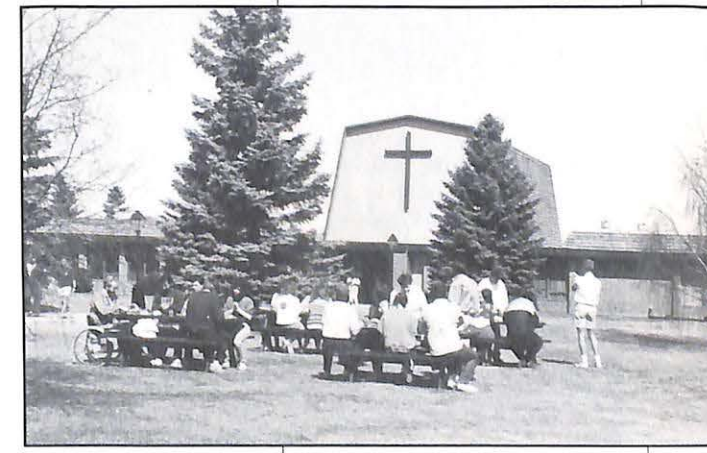
### Witnessing— Future Anticipation

With the celebration of the 50th Anniversary of NABC/EBS last year, a dynamic future has been charted. A new campus master plan was adopted by the Board of Trustees. This master plan visualizes a campus

expansion that will make provisions for a student body of 800 college and 200 seminary students and encompass the entire land space at our disposal. This long-range plan anticipates extensive campus development in the future and designates a missionary residence, to be built this summer, as well as a new seminary complex, including a special lecture theatre for use by both the College and Seminary, as priority construction.

"Foundations for the Future" is the theme of our capital funds campaign launched in 1991.

"And God is able to provide you with every blessing in abundance so that you may always have enough of everything . . . and may provide in abundance for every good work" (2 Corinthians 9:8, RSV). □



**1944**  
WMU included in Conference budget as a cooperating society

**1945**  
Purchase building in Forest Park for Conference international office; **Scripture Memory Program** begins

**1946**  
1st full-time missionary to Indians, Bull Reserve, Canada; Twila Bartz; Student Service Plan gives youth summer ministry opportunities

**1946**  
28th Triennial Conference, Tacoma, WA, George A. Lang, moderator; name changed to North American Baptist General Conference

**1946**  
Conference reorganized: new constitution and preamble with tenets of faith; Frank H. Woyke elected first full-time executive secretary; comptroller position approved

**1946**  
1st missionary doctor, Dr. and Mrs. Leslie Chaffee, in Cameroon; support of 11 pastors in Bulgaria, 3 in Romania, and 6 in Austria ceased due to Communism; H.G. Dymmel elected General Missionary Secretary

**1946**  
Conference incorporated as North American Baptists, Inc.; one minister, one layman from nine Conferences form General Council; **Youth Compass** quarterly program book, begins publication; E. J. Baumgartner, manager, Publication Society

**1947-55**  
6,200 immigrants assisted in Canada, William Sturhahn, immigration secretary; 12 new congregations formed as a result

**1947**  
W. J. Luebeck, editor, **Der Sendbote**, manager, Publication; Society **Baptist Herald** celebrates 25 years

**1947-49**  
Million Dollar Offering campaign

**1948**  
Church Loan Fund created; Leona Ross appointed missionary to China; 1st mission hospital in Cameroon; Ministers' Conference, Green Lake, WI

**1949**  
\$600,000 dollars spent for relief: helped 333 immigrant families

# Missions Overseas

helping to win unreached people groups for Christ by the year 2000

*"The Cameroon Baptist Convention youth have held several all-night prayer meetings. They see themselves powerless to overcome financial hurdles, to change the waywardness of many of their elders, to effectively wrestle against the powers of darkness, and to be channels of revival. They have and are turning to the omnipotent God for help, strength, guidance, power, and change."*

The results of witnessing—responding to Christ's command and vision that all be given the opportunity to respond to Christ as Lord and Savior—give evidence of growth in Christ's church overseas.

Missionaries witness through a variety of ministries: planting churches, witnessing one-on-one and through special evangelism emphases, relationships in administration, educating seminary students, providing medical services and training medical workers, teaching in schools, and going to unreached people groups with the Gospel.

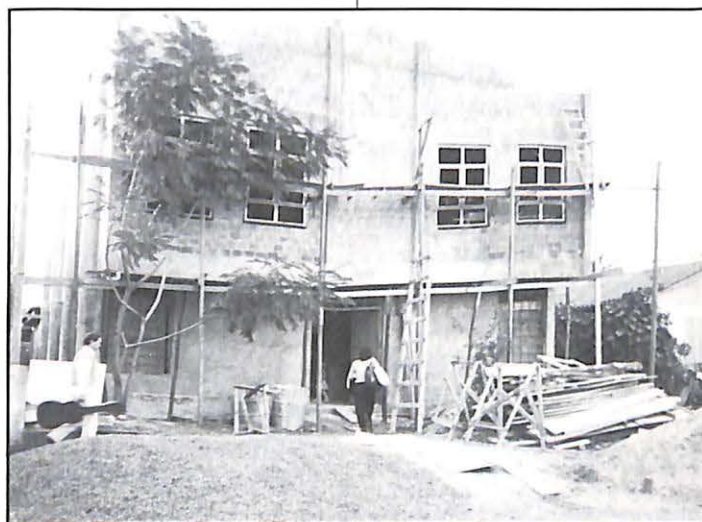
The goals of our Conference overseas missions uphold the primary reason we exist as a Conference of churches: to help plant an indigenous witness in each unreached people group by the year 2000 and to equip Christians to witness.

- **Our missionaries plant new churches**  
Our goal for 1991 is to plant 15 new churches overseas.
- **Philippines.** In 1990, Missionary Gregg Evans assumed the leadership of a Bible study group started by Missionary Lee Bertsch. Eighteen received Christ as Savior during the fifth session. Six more came to Christ in the next two weeks, and 20 more people signed up for Bible study.

*Fourteen more people committed themselves to Christ. Twenty-four adults attended the first service of this new church plant on May 19, 1991. By the middle of June, Evans had baptized 30 people.*

*"I'm the church planter's assistant," says Evans. "God is the real church planter."*

- **Brazil.** Six churches and four congregations were organized by the Baptist



conventions in the two Southern states: Santa Catarina and Rio Grande do Sul.

*"One of the greatest rewards in church planting is to see people maturing in the Lord," says Ken Bayer in Brazil. "Four men from the church, three of them former alcoholics, go visiting each Friday night. They witness to those who do not know Christ as Savior. As a result, a new preaching point has developed."*

- **Cameroon.** The move to plant churches in urban centers continues. The Dale Hufnagels are in French language study in Quebec preparing for church planting among the French-speaking people in Bafoussam in 1992. Plans are to plant churches in Douala, also.
- **Japan.** In 1989 Missionaries Reimer and Nobuko Clausen started a church in Kameoka, Japan. Witnessing and spiritual growth oppor-

tunities came through home visitation, as well as worship services and Bible studies held in a believer's home.

Lugere, a new church work has started, and they are seeking a pastor. "Once a month, the medical staff goes into Mayo Lugungo to help start a new church," says Missionary Barbara Kieper. "The medical staff takes a medicine box to a Fulani village, and there a national pastor shows Old Testament filmstrips in the evening. We pray a new church will be planted there, also."

- **Our missionaries witness as they network with nationals to bring the gospel to unreached people**

It is estimated that there are about 12,000 unreached people groups in the world today. Our Conference has a



The group now has its own new facility, built in 1991. It serves as a home for the Clausens as well as a church building. The income earned by missionaries teaching English classes is used to buy land for new church planting projects.

- **Nigeria.** As a result of medical clinics at Tunga



1949

29th Triennial Conference, Sioux Falls, SD, G.A. Lang, moderator; 42,000 members; CTI made cooperating organization; vote to relocate N.A.B. Seminary to Sioux Falls, SD

1949

\$1,500,000 given in 3 years; supporting missionaries to Indians (Alberta), Spanish-Americans (Colorado), Cameroon (26), plus China and Austria

1949

Goal: 7,000 conversions; **Baptist Herald** and **Der Sendbote** to be published bi-weekly

1950

Richard Schilke becomes General Missionary Secretary; new building dedicated for N.A.B. Seminary, Sioux Falls, SD

1950

The Ernest Hildebrands, 1st laymen-in-action to Cameroon to build Banso hospital

1951

Pastoral training begins in Ndu, Cameroon; 1st missionaries to Japan: Rev. and Mrs. Jay Hirth and Florence Miller

1952

30th Triennial Conference, Philadelphia, PA, George A. Lang, moderator; more than \$1,500,000 given in 3 years; 55 overseas missionaries; 1,242 immigrants assisted in settling in Canada

1952

66 mission-aided churches in North America; resolve to plant 25 churches in 3 years; emphasis on evangelism and stewardship next triennium

1952

CTI constructs new building; **Der Sendbote** celebrates 100 years; **Baptist Herald** and CBY and SS Union celebrate 30 years; 274 churches, 44,019 members

1954

1st missionaries to Rio Grande City, TX; the Raymond Castros; Conference joins Baptist Joint Committee on Public Affairs

1955

31st Triennial Conference, Waco, TX; Walter W. Grosser, moderator; Commissioned Baptist Youth Fellowship becomes cooperating society, Lawrence Bienert, youth secretary

**"We continue to work toward the realization of the N.A.B. Cameroon goals as a part of Vision 2000."**

—Dr. Oryn Meinerts, field secretary, Cameroon Baptist Mission

goal to reach at least 12 of these groups by the year 2000.

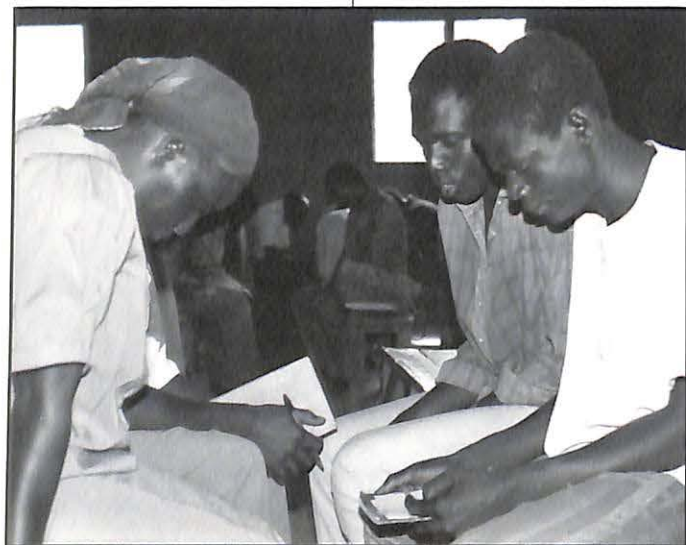
- **Nigeria.** The Mambilla Baptist Convention has sent two Ndoro pastors, 1990 graduates of the Mambilla Baptist Theological School, to serve in previously unreached people groups.
- **Brazil.** Missionaries Ralph and Martha Nelson are planting churches among the unreached people, the fishermen, in the Florianopolis area of Santa Catarina. One church in Campeche has been established; 43 people have made decisions for Christ. Groups of volunteers from Alberta and California constructed the church building. A second church plant is underway with a building program projected for 1992.
- **Cameroon.** For many years, Cameroonian Baptists have been evangelizing unreached people groups and planting churches. They

hope to send Cameroonians to distant areas in Cameroon and to neighboring countries; one is to the pigmy area of South East Cameroon.

Missionaries Scott and Ruth Clark began a ministry in Cameroon in 1991.

- **Cameroon and Nigeria.** A witness for Christ is strongly

evident through the Life Abundant Program — primary health care and health centre services. This medical primary rural health care in remote villages has helped reduce the mortality rate of infants, children, and mothers. The primary focus of this ministry is to bring the Word of God to people who have no



1955

Commission on Denominational Objectives appointed; Seminary adds professor of Christian Education; 288 churches, 47,319 members

1955

Cameroon mission churches organize as Cameroon Baptist Convention; Children's Home closed

1956

God's Volunteers program begins; Daniel Fuchs, 1st director; **North American Hymnal** published; W. J. Luebeck manages Publication Society; edits **Der Sendbote**

1958

32nd Triennial Conference, Edmonton, AB; Walter W. Grosser, moderator; 6,000 attend; Director of Evangelism and Church Extension: Daniel Fuchs; CTE expands to 3 part program; denominational objectives approved

1959

Denominational Advance Building Fund \$250,000; Frank Veninga, president of N.A.B. Seminary; five district secretaries appointed

1960

A. S. Felberg, president of Christian Training Institute; **Dynamic Junior Camping** program launched



witness.

God has blessed the film and seminar evangelism ministries connected with the Life Abundant Program. In nine months, 1,391 persons responded to invitations. Of these, 313 were new believers.

**Our missionaries witness as they plan, encourage, and participate in special evangelism emphases**

Evangelism ministries on our mission fields result in people receiving Christ as Savior, being baptized, and joining local churches.

- **Brazil.** Our missionaries cooperated with the Brazil National Plan of Evangelism to win 1,000 people for Christ in 1990. More than 1,000 received Christ as Savior.



- **Cameroon.** A group of volunteers from Canada, Cameroon Sunrise, showed the **Jesus** film in January 1990 and January 1991. As a result, 18,000 of the 170,000 who viewed this film responded for counseling. One church alone disciplined 28 people for baptism.

*After seeing the **Jesus** film, a teenage girl in Bafoussam, determined to find the church which showed the film. She finally found the primary school where the Baptist believers were worshipping. Even though she undergoes persecution from her father, she has come to have a vital relationship with*

*Jesus Christ and enjoys fellowship with her new Christian friends.*

- **Japan.** The youth of the Japan Baptist Conference churches met in Inazawa for an evangelism rally in January 1991. They distributed more than 3,000 tracts in one day.

*One Saturday a month, the church in Ise has a "Saturday Night." This includes a Christian video, a concert, a special speaker, or an activity which gives nonChristians an opportunity to visit the church informally.*

**Our missionaries witness in theological schools as they prepare students for the pastorate and teach students how to witness**

Our goal is to assist in the training of 200 national pastors and church workers overseas.

1960

N.A.B. Seminary fully accredited by AATS; Publication Society moves from Cleveland to Forest Park, IL; Lawrence Bienert, manager

1961

33rd Triennial Conference Minneapolis, MN; John Wobig, moderator; Fred Grosser recognized 18 years; Conference treasurer, Kenneth Miller elected

1961

Department of Christian Education approved, G. K. Zimmerman, secretary; Secretary of Stewardship and Higher Education position approved

1961

Resolution concerning religious liberty and separation of church and state; Warwar field joins Nigeria; Church Extension Builders launched

1962

David J. Draewell, secretary of stewardship and higher education

1963

Minnie Kuhn, first missionary to Mambilla, Nigeria; 1st CBYF Congress held at Lake Geneva, WI

**"Churches could do more if they only inhaled the inspiration that moved the Macedonian churches to action in 2 Corinthians 8."**

—The Rev. Samuel Ngum, executive secretary, Cameroon Baptist Convention.

- **Rio Grande do Sul Baptist Theological Seminary, Porto Alegre, RS, Brazil.** As a result of your mission giving, 30 persons, trained at this Brazilian Seminary, are ministering today.

*Gerson Garros, a graduate of this Seminary and North American Baptist Seminary in Sioux Falls, SD, is now the Educational Department Coordinator and a professor. Another graduate of this Seminary, Florinda Serafim, completed studies at Edmonton Baptist Seminary in 1991 and returned to Brazil to assist in church planting and leadership training.*

- **Bicol Baptist Theological Training Center, Legazpi City, Philippines.** Two Filipino workers, trained at the school, now serve as

pastors at Albay Bible Community. This is the first church established by our missionaries in the Bicol Region—an unreached area.

- **Cameroon Baptist Theological Seminary, Ndu, Cameroon.** The need for

- **Mambilla Baptist Theological School, Mbu, Nigeria.** In 1990-1991, 105 men studied at MBTS; 80 students were turned away because of lack of room. All of the 22 MBTS 1990 graduates are serving as pastors, evangelists, or Christian Religious Knowl-



trained workers in Cameroon is great. Fourteen graduated in June 1990 and 19 in June 1991. One goal of the school is to give students experience in church planting, evangelism, and Christian Education.

- **Theological education in Eastern Europe.** Missionary Harold Dressler teaches short-term courses in seminaries, such as the one in Bucharest, Romania, and intensive training courses for pastors in various Eastern European countries.

edge teachers in public schools.

*Some MBTS students took the Good News of Jesus Christ to a previously unreached village. The Lord used the ministry of these students, and the village chief has invited a pastor to teach them more about Christ.*

- **Missionaries witness through teaching English classes**

*A lady, whom Missionary Joan Stoller taught English Conversation in Japan,*

*followed the Lord devotedly as she continued to pray for the conversion of her husband. Years went by. The Stollers corresponded with her and visited her. Three years ago, her prayers were answered. Her husband, an executive of a large steel company in Japan, turned his life over to Christ.*

*In thanks to God for what He had done in their lives and for the missionaries who gave of their lives to go to Japan, they donated a large piece of land for a Christian retirement center and dedicated it on Aug. 7, 1990. They have joined the Tsu church.*

- **Our mission provides opportunities for both youth and adult volunteer service**

Volunteers from North America witness overseas as they assist missionaries and national Baptists in evangelism, in Theological Education by Extension, in constructing churches and camps, rewiring mission buildings, and setting up computer programs and libraries.

N.A.B. Seminary and Edmonton Baptist Seminary professors have taught courses in Japan, Brazil, Cameroon, and Nigeria.

- **Our missionaries train nationals to assume various areas of ministry**

As a result of discipling and special training, Cameroonians have been employed by the Cameroon Baptist Convention as Youth Director (1989); Crusade Ministry Coordinator (1990); Director of Women's Work and Evangelism Secretary (1991).

- **Continue researching a mission presence in a new mission field**

Establish the Mexican mission field with one missionary couple in 1992.

- **Raise and distribute \$50,000 in world relief funds**

In 1990, \$37,702 was received and disbursed.

- **Celebration**

Our mission work in the two southern states of Brazil started in 1966 with Missionaries Herman and Ardath Effa and Richard and Beth Rabenhorst. At that time, there were 43 churches in the states of Rio Grande do Sul and Santa Catarina. Twenty-five years later, there are 102 churches—a growth of 2.4 churches per year.

**Missionary Force**

At the end of 1990, our overseas missionaries numbered

	Career	STM*	Total
Brazil	10		10
Cameroon	27	14	41
Japan	10	3	13
Nigeria	9	3	12
Philippines	4		4
Eastern Europe	2		2
<b>Total</b>	<b>62</b>	<b>20</b>	<b>82</b>

This compares to 63 career and 21 STM\* at year-end 1989.

\*STM—short-term missionary

**1990 Field Statistics**

**Brazil\***

- 102 churches (+6)
- 7,400 members (+404) (+5.8%)
- 520 baptisms
- 11 associations
- 116 ordained pastors
- 35 seminary students (Rio Grande do Sul)
- 11 theological education students (Santa Catarina)

**Japan**

- 20 baptisms
- 8 churches
- 423 members (+18) (+4.4%)
- 8 pastors
- 1 Christian Education Center

**Nigeria, West Africa**

- 7 fields (+1)
- 27 associations (+4)
- 165 churches (+10)
- 12 preaching points (+2)
- 16,818 members (+887) (+5.6%)
- 1,150 baptisms (+69)
- 90 trained pastors (+15)
- 65 untrained pastors (-25)
- 26 ordained (+2)
- 1 theological school
- village health care ministries

**Cameroon, West Africa**

- 20 fields (1989)
- 112 associations (1989)
- 654 churches
- 54,226 members (+1,660) (+3.2%)
- 385 pastors (90 ordained; 295 non ordained)
- 111 primary schools
- 6 secondary schools
- 1 theological seminary
- 3 hospitals
- 2 health centers
- 1 school for the blind
- Life Abundant Program

**Philippines**

- 1 church
- 46 members (+9) (+24.3%)
- 11 baptisms
- 3 leaders being trained

We share these statistics with our national workers and in some cases\* other mission boards that are working with our conventions.



Missions Department executive staff (l. to r.): Dale Fuchs, associate director; Herman Effa, missions director; and Fred Folkerts, associate director.

1961-64

6,891 children enrolled in Scripture Memory Program

1964

34th Triennial Conference, Sacramento, CA. Edwin H. Marklein, moderator; approve \$1,300,000 goal; adopted goal that every church of 300 members or more parent a new church; 1st short-term missionaries appointed; Conference joins American Bible Society

1964

325 churches; 82 missionaries; 52,625 members; 4,000 Church Extension Builders

1965

Moments with God begins publication; B. C. Schreiber, editor

1966

Martin Leuschner becomes ill, cannot continue position; transfer Austrian mission field to Baptists of Germany; 2nd CBYF Congress held in Estes Park, CO

1967

35th Triennial Conference Detroit, MI. A. Dale Ihrie, moderator; approved full-time editor of English publications: John Binder elected; Mission Advance Program fund-raising

**Baptist Herald,** July/August 1991, Vol. 69, No. 6  
 Barbara J. Binder, editor  
 Phyllis Hill, subscriptions fulfillment  
 Holly Fann, assistant  
 Jean Gingrich, assistant  
 Dorothy Eisaman, typesetting  
 Dwight Walles, design  
 Photos by: A. Helwig, L. Pelzer, P. Hampel, H. Effa, K. Redshlag, R. Wieland, J. Binder and missionaries

**BAPTIST HERALD** (USPS 042560) (ISSN-0 005-5700) is published monthly (except January/February and July/August bi-monthly) by the North American Baptist Conference, a binational conference of churches in Canada and the United States, 1 So. 210 Summit Ave., Oakbrook Terrace, IL 60181. Phone: (708) 495-2000; Fax: (708) 495-3301. Second class postage paid at Villa Park, IL 60181 and at additional mailing office, and registered as Second Class Mail under permit #9327 at Norwich, Ontario.  
 SUBSCRIPTION RATES in the United States—one year \$8.00; two years—\$15.00; Canada—one year \$10.50; Church Family Plan (United States)—\$6.00, (Canada)—\$8.00; Single Copy (US \$)—\$1.00; foreign subscription (US \$)—\$16.00 one year.  
 ADVERTISING RATE: \$8.00 per inch single column (2 1/4 inches), black and white. OBITUARIES: \$8.00 US; \$9.00 CDN; to accompany obituary; (100 word limit).  
 CHANGE OF ADDRESS: Six to eight weeks notice required for change of address. Furnish effective date and address label from recent issue. Send address change to **Baptist Herald** subscriptions, 1 So. 210 Summit Ave., Oakbrook Terrace, IL 60181-3994.  
 Member of Evangelical Press Association.

# Management Services

*"Our churches and people continue to be sacrificial givers to ministries of our Conference. Our worldwide ministry asks the Management Services Department to receipt funds from two countries and to distribute them into eight countries and currencies. Thank you for your faithful support."*

—Ron Salzman, management services director

*The audit report by Deloitte and Touche indicates that all financial operations have met generally accepted accounting principles. The auditors' report is available by writing the Management Services Director, N.A.B. Conference International Office.*

**D**uring 1990, North American Baptist Conference churches and individuals gave generously — \$6,483,544 — to the \$7,289,195 goal for missions and ministries at home and overseas. We did not achieve the goal, but we rejoice and thank God for the ministry accomplished for His glory and to bring people to Christ. Examples of these are printed throughout this issue of the *Baptist Herald*.

**■ Per capita giving in 1990**

- Total Conference giving: \$107
- Total giving to local churches, Associations, and Conference: \$907
- Total all-purpose giving including non-N.A.B. projects: \$949.

**■ Bequests**

In 1990, \$256,338 was received through bequests.

**■ Pension Planning**

With a goal of increasing the amount of retirement savings, the Pension Task Force oversees the pension funds of the Conference. In 1990, \$34,000 were distributed to retired ministers as a special year-end gift.

In Canada, a new RRSP insurance carrier, Great West, will assume the investment responsibilities for our Canadian pension funds. In the

**How the contributions were used**

Established Ministries	1988	1989	1990
Overseas Missions	\$1,831,980	\$1,857,896	\$2,475,485
Church Growth	1,182,337	1,168,244	1,132,654
College/Seminaries	909,430	947,401	898,673
General Council	244,500	313,368	281,685
Area Ministries	307,214	330,782	866,444
Interest/Exchange	38,359	90,366	185,158
<b>Total</b>	<b>\$4,513,820</b>	<b>\$4,708,057</b>	<b>\$5,840,099</b>
Expansion/Specials			
Overseas Missions	109,344	194,384	916,282
Church Growth	1,103,549	1,312,808	274,828
Conference Services	432,636	462,409	27,191
<b>Total</b>	<b>\$1,645,529</b>	<b>\$1,969,601</b>	<b>\$1,218,301</b>
Bequest	144,352	143,029	256,338
Capital Funds	95,203	10,932	0
<b>Total Expenditures</b>	<b>\$6,398,904</b>	<b>\$6,831,619</b>	<b>\$7,314,738</b>

*Accumulated reserve funds were expended in addition to current annual contributions*



*The Management Services executive staff: (l. to r.) Al Keller, data processing manager; Sarab Redlich, staff accountant; Bill Gingrich, oversees the accounting functions; Ron Salzman, department director; and Karen Dickau, oversees building operations and insurances.*

U.S.A., we will continue with Minnesota Mutual.

Our Conference goal is that our churches will contribute an additional 10 percent of the pastor's salary for retirement savings.

**■ Health Insurance Premiums**

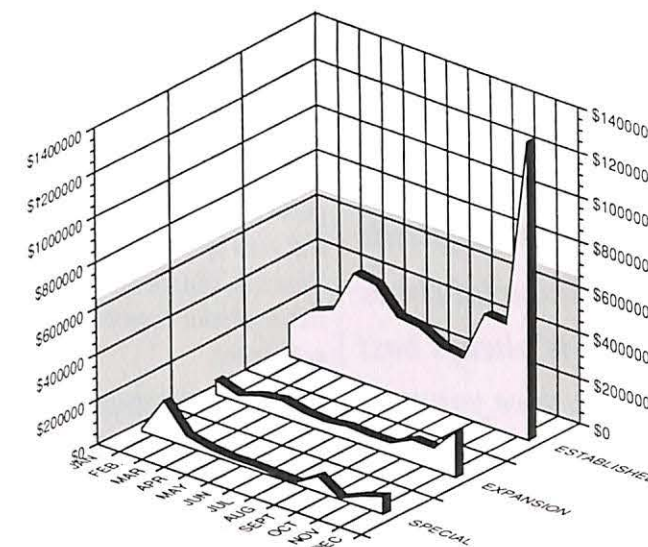
In 1990, the Conference executive staff agonized over the drastic increases in health insurance premiums. As a result, in 1991 Mass Mutual was chosen as the new medical insurance carrier for the U.S. Conference employees, Seminary employees, and U.S. ministers and church staff.

**■ Computer Study**

The N.A.B. Conference computer system needs replacing. Focusing on organizing information around our churches and people, a new system for donations, constituency data, financial transactions, and word processing is being sought.

*The graph at the right shows how the contributions came in. Note that the monthly financial needs were not met—only a few months. Consistent giving is needed to avoid borrowing funds for missions and ministries.*

**HOW THE MONEY CAME IN BY MONTH**



**Where the money came from (1990)**

*(Churches and individuals within Associations)*

Association	Established Ministries	Expansion Ministries	Specials	Total 1990	Members 1990	Per Capita	1988	1989
Alberta	\$ 843,484	\$255,230	\$ 68,972	\$1,167,686	7,871	\$148	\$1,184,452	\$1,149,1553
Atlantic	111,777	10,916	3,271	125,964	1,514	83	184,496	206,395
British Columbia	484,137	71,709	28,578	584,424	4,187	140	537,637	657,818
Central Dakota-Montana	215,040	46,928	21,067	283,035	3,362	84	266,613	283,376
Central Pacific	167,185	13,993	2,178	183,356	2,284	80	190,224	199,749
Eastern	317,753	40,385	16,347	374,485	3,608	104	360,334	365,923
Great Lakes	536,637	28,754	17,406	582,797	7,108	82	585,395	614,165
Illinois	140,903	33,900	6,523	181,326	1,993	91	221,270	186,126
Iowa	180,805	18,775	4,809	204,389	2,227	92	212,584	216,414
Manitoba	320,037	38,008	21,882	379,927	2,433	156	393,690	379,584
Minnesota-LaCrosse	180,008	28,252	4,893	213,153	1,544	138	242,383	245,135
Miscellaneous Churches	2,800	513	178	3,491	85	41		
Northern California	321,580	53,939	20,588	396,107	6,188	64	303,463	343,640
Northern Dakota	147,969	23,351	7,655	178,975	2,137	84	180,539	183,070
Pacific Northwest	114,296	15,075	3,427	132,798	1,975	67	142,152	144,611
Saskatchewan	148,642	15,994	8,860	173,496	1,334	130	176,151	194,248
South Dakota-Wyoming	195,664	29,273	13,928	238,865	2,717	88	235,430	244,801
Southern	59,573	8,102	150,532	218,207	1,329	164	64,237	78,406
Southern California	109,966	32,358	2,819	145,143	1,658	88	128,960	156,061
Southwestern	233,318	24,237	8,996	266,551	2,295	116	267,694	290,373
Wisconsin	167,239	7,844	20,934	196,017	2,469	79	137,227	161,351
<b>Subtotal</b>	<b>\$4,998,813</b>	<b>\$797,536</b>	<b>\$433,843</b>	<b>\$6,230,192</b>	<b>60,318</b>	<b>\$103</b>		
<b>Inter-Association</b>	<b>\$ 54,656</b>	<b>\$113,769</b>	<b>\$ 84,927</b>	<b>\$ 253,352</b>			<b>\$ 144,418</b>	<b>\$ 309,910</b>
<b>Totals</b>	<b>\$5,053,469</b>	<b>\$911,305</b>	<b>\$518,770</b>	<b>\$6,483,544</b>	<b>60,318</b>	<b>\$107</b>	<b>\$6,159,349</b>	<b>\$6,610,309</b>

1967

Added a woman to Board of Missions; approved uniform policy of electing and appointing Conference personnel

1967

Approved CTI (N.A.B. College) as undergraduate theological training school; approved relocation of N.A.B. College to new campus

1967

Approved change of name of CTI to N.A.B. College; set retirement age for Conference workers at 65

1967

Joins N.A.B. Fellowship; Assistant Secretary for Home Missions and Evangelism appointed; Daniel Fuchs; estate planning ministry begins; Everett Barker

1968

Frank H. Woyke resigns, G. K. Zimmerman appointed executive secretary of Conference; CTI receives American Bible College Accreditation; R.J. Kerstan, editor of German publications; Bruce Rich, secretary of Department of Christian Education

1970

36th Triennial Conference Winnipeg, MB, Stan Johnson, moderator; Associations elect representatives to General Council

1970

Associations aligned in six areas; 343 churches; 54,997 members; 113 home and overseas missionaries; \$1,953,467 in contributions

1970

Joe Sonnenberg, president, N.A.B. College/DS; David J. Draewell, president, N.A.B. Seminary

1971

Milton Hildebrandt, Conference treasurer

1972

Church Extension Investors Fund established; Robert Mayforth, comptroller; Conference fiscal year changed to calendar year

1973

LaVerna Mehlhaff, first WMU director

1973

Publication Board abolished

# Development

*promotes unified direction and growth*

**"In difficult financial times it is always best to give yourself to the Lord and then encourage others to do the same."**

—Lewis Petrie, development director

The Development Department communicates to you the financial needs of missions and ministries in North America and overseas. Through publications, audio-visuals, and visits by staff to your churches, you see and hear the results of your prayers, gifts, and service.

## You Can Help Reach the Goal

Throughout 1991, you, as a member or friend of an N.A.B. Conference church, have the opportunity to help meet the financial goal of \$6,600,000. This is a 1.7 percent increase over the giving in 1990 of \$6,483,546. In order to meet

North American Baptist Conference Committed to Give our stewardship in action		
	1991 Goal	1992 Goal
<b>Established Ministries</b>		
Undesignated contributions <i>(to be distributed to ministries below)</i>		
Overseas Missions	\$2,293,646	\$2,418,281
Church Growth Ministries	1,102,389	1,052,201
Educational Ministries	939,134	947,682
Area Ministries	1,012,656	1,042,095
General Council	222,175	70,741
Interest/Exchange	20,000	
<b>Total</b>	<b>\$5,590,000</b>	<b>\$5,531,000</b>
<b>Expansion Ministries</b>		
Overseas Missions	\$ 424,000	689,000
Church Planting Ministries	322,000	420,000
<b>Total*</b>	<b>\$ 746,000</b>	<b>\$1,109,000</b>
<b>Specials</b>		
Overseas Missions	\$ 200,000	\$ 212,000
Church Growth Ministries	14,000	38,000
Auxiliary Ministries	50,000	60,000
<b>Total</b>	<b>\$ 264,000</b>	<b>\$ 310,000</b>
<b>Total giving goal</b>	<b>\$6,600,000</b>	<b>\$6,950,000</b>

\*(Schools' annual funds not included.)



The Development Department executive staff planned and produced materials for Vision 2000 and the Biblical Imperatives to worship, to grow, and to witness. (l. to r.) Dorothy Ganoung, editor of Moments With God and "Link"; Arthur Helwig, audio-visuals; Lewis Petrie, director; Barbara Binder, editor of Baptist Herald and "N.A.B. News"; and James Fann, stewardship/Every Church Visits.

the \$6,600,000 giving goal, a giving average of \$110 per member will need to be given. To meet this average, some churches or people will need to give more in order to meet the goal.

The greatest need is in funding the Established Ministry section of the total goal. From this come the funds for overseas missionaries and church planters already serving, for Area Ministers, for training seminary and college students, for the General Council, which meets once a year, and for the ministries of the International Office staff.

**1973**  
37th Triennial Conference, Wichita, KS, Aaron Buhler, moderator; Christian Education Department becomes Church Ministries Department with a board

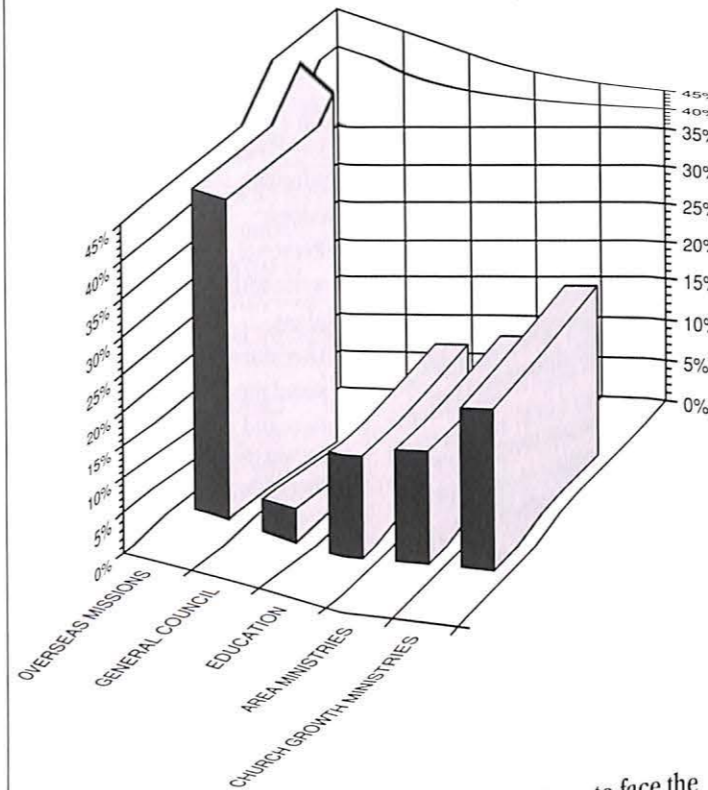
**1973**  
Communications and Stewardship combined; Roger Williams Press Board and Christian Education Board dissolved

**1973**  
Adopted goal of One Million Contacts for Christ; 346 churches; 54,853 members

**1976**  
38th Triennial Conference, Portland, OR, Delmar Wesseler, moderator; 105 churches report 150,000 contacts for Christ

**1976**  
Church Extension Department established, Lyle Wacker, church extension secretary; 40 church extension churches; General dropped from name, North American Baptist Conference

## 1991 PRIORITIES FOR GIVING (TO N.A.B. CONFERENCE MISSIONS AND MINISTRIES)



### Sacrificial Giving

*"... but they first gave themselves to the Lord and to us by the will of God" (2 Corinthians 8:5).*

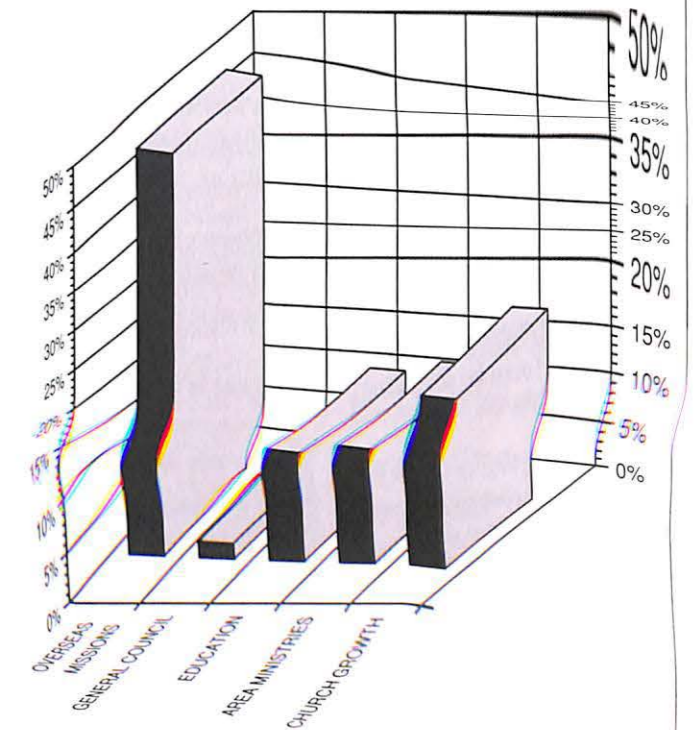
It seems as though everyone wants something. In uncertain economic times, it seems that everyone needs more money to carry on their particular

activity. We all have to face the strain of trying to make do with less.

Paul, the apostle, reports about people who faced these predicaments and still gave according to their ability and even beyond—must have been N.A.B. Conference-type people. Even though we are facing

very difficult economic times, it is also the case that we are confronted with desperate spiritual times. Financial sacrifice is needed so that all people groups will have heard the Gospel by the year 2000. But first there must be a gift!  
—Lewis Petrie, development director.

## 1992 PRIORITIES FOR GIVING (TO N.A.B. CONFERENCE MISSIONS AND MINISTRIES)



Tear Here

## MY RESPONSE

Jesus said: "Where your treasure is, there will your heart be also" (Matthew 6:21).

YES, I (we) want to help make Vision 2000 a reality by making the following gift to N.A.B. Conference mission and ministries for this current year. (Please make check or money order payable to North American Baptists, Inc.):

\$100  \$300  \$500  \$1,000  other amount \$ \_\_\_\_\_

I (we) will give through my local church.

I (we) would like more information about Vision 2000.

I (we) request more information about  serving as a missionary overseas  N.A.B. College  Edmonton Baptist Seminary  N.A.B. Seminary  planning my (our) estate  serving on a youth team overseas or at home  serving as a volunteer in North America or overseas  other \_\_\_\_\_

I (we) wish to subscribe to the Baptist Herald: US\$8.00; CDN\$10.00.

Name \_\_\_\_\_ Spouse's Name \_\_\_\_\_

Street Address \_\_\_\_\_

City \_\_\_\_\_ State/Prov. \_\_\_\_\_ Code \_\_\_\_\_



## Witnessing through Planning Your Estate

*"I'm a high earner, but it's getting harder than ever to build up a retirement nest egg."*



Dr. Constantino Salios (l.) and Mel Bergstresser (at right) are available to help you plan your estate.

### WE'LL HELP

**T**ax shelters are not always the answer, nor are bank accounts that erode with inflation and income tax. We can become your partner in retirement income planning.

If you're trying to build a healthy retirement income source, consider that

- Tax reform has substantially reduced the value to most wage-earners of IRAs and other traditional salary reduction plans.
- You may be paying sizeable income taxes before "putting away" part of your remaining net income.
- You may not have time to properly manage your investments.

- You may wish to protect your investments from attachment by creditors.
- Upon your death, your estate may be subject to death taxes up to as much as 55 percent.

**Our goal is to help you**

- Gain income tax advantages.
- Increase your cash flow in retirement years.
- Offset other income taxes you might pay.
- Reduce your death taxes.
- Increase your gifts to your beneficiaries at your death.

A special planning report, **The Charitable Retirement Income Trust**, will show you how using a concept that has been permitted by law for nearly 20 years can help you solve your retirement problem.

**S**omeone said: "Give me an hour with a person's checkbook, and I'll tell you what that person believes in."

A person's estate plan also reflects his or her enduring values.

It does take time and effort to think through what is involved in planning an estate. And it also takes prayer because all of life has a spiritual dimension for Christians.

The estate planning ministry of the Conference is dedicated to assisting individuals who may need our help either to write a will for the first time or to review estate plans that have been made. Our service is without

cost or obligation and is confidential.

Please feel free to contact the Estate Planning Ministry of the Conference for the following services:

- Personal appointments to write wills or review estate plans.
- Literature to help you understand the estate planning process and the tools available.
- Stewardship seminars including Estate Planning Seminars, stewardship teaching, and money management seminars.

*All information will be treated with confidentiality.*

**YES**, I want to take advantage of the services of the Estate Planning Ministry. I understand there is no cost or obligation.

- Please send me a free copy of your **Will and Trust Planning Guide**.
- Please contact me about a personal appointment to assist me in my estate planning.
- Please send me the special planning report, **The Charitable Retirement Income Trust**.
- Please contact me about an Estate Planning Seminar or other stewardship teaching ministry.

Name \_\_\_\_\_

Address \_\_\_\_\_

City \_\_\_\_\_ State/Prov. \_\_\_\_\_ Code \_\_\_\_\_

Telephone ( ) \_\_\_\_\_

Birthdate \_\_\_\_\_ Spouse's birthdate \_\_\_\_\_

Mail to: Dr. Constantino Salios  
North American Baptist Conference  
1 So. 210 Summit Ave., Oakbrook Terrace, IL 60181-3994  
Telephone: (708) 495-2000; Fax: (708) 495-3301

**H**ave you ever watched a potter/artist create something out of a lump of clay? I watched a man from Oklahoma do this in Milwaukee a number of years ago. He began by saying the lump was worth 25 cents. With the turning of the wheel and his skill, the lump increased in value, utility, and beauty—a dish for \$2.50, a bowl for \$25, and a vase for \$250.

Then in his Oklahoma "slanguage," he asked the crowd, "And what are you doing with what you've got? Complaining about a 25 cent lump? Or yielding it to the wheel and skill of the Potter to make something more valuable, beautiful, useful?"

This year, as a Conference, we are dedicated in a special way to focus on the **Vision 2000 Imperative to Witness**. If you're like me, this word raises some joy—and some fears.

We remember some good witnessing experiences. However, fears creep over us anew—fears of failure, success, rejection, ineptness, heavy cost, lack of power, shortage of wisdom, or embarrassment about the gaps which may exist between

what we say we believe or how we behave.

For many of us, a real issue is our lack of friendships with those without Christ. It is too easy for us to be "ghettoized" in clusters of Christians that have no vital connections with those in the world.

Some of our fears might be alleviated if we would realize that much of our witnessing effectiveness is related to who we are, where we've been, and what we have. God recycles most things. What are we doing with what we have?

For insight, read the Gospels afresh. Look at the witness of Jesus. To witness, He used things that were at hand: a stretcher, a living room, synagogue, a well, a jug, an upper room, a boat, a fish net, a

funeral, a wedding, a religious celebration, a touch, a hug, some mud, a boat, a donkey, a sinner's coming-out party, a boy's fish and chips, a hillside, a seaside, desert, downtown, gardens, graveyards, or garbage dumps (Golgotha).

Jesus taught that we witness when we do practical ministries to try to meet peoples' needs—feed the hungry, clothe the naked, visit the prisoner, bandage the wounded, refresh the thirsty, or forgive the fallen. Our light shines when people see our good works and glorify our God.

Jesus painted pictures and stories on peoples' minds. These stayed with them long after precise principles had drifted away. Jesus talked about things at hand, things part of everyone's daily story—

- Seeds/Weeds/Growth/Harvest
- Sheep/Shepherds/Wolves
- Light/Darkness • Salt/Cities on a Hill • Illness/Doctors/



## What Are We Doing With What We Have?

by Ron Mayforth

*Jesus used almost everything, anything, and everywhere to turn on the Gospel light in a person's soul. We need to audit Jesus' witness, learn, and follow suit.*

1976

Conference International Office relocates to new facilities in Oakbrook Terrace, IL

1979

39th Triennial Conference Bismarck, ND, Ken Fischer, moderator

1979

Approves Baptist Beliefs Task Force; G.K. Zimmerman retires as executive secretary

1979

Elections: John Binder, executive director; Fred Folkerts, missions director; John Ziegler, church extension director; Executive Committee approved

1979

Approved Long-range Planning Committee; more than 500 youth attend youth program; 357 churches; 57,846 members

1979

**Heritage and Ministry of North American Baptist Conference** by Frank H. Woyke published

1979

Constantino Salios, stewardship and communications director; WMU changes name to Women's Missionary Fellowship

1980

Barbara Binder, editor, **Baptist Herald**; Dorothy Ganoung, editor, **Moments With God**

1981

Area ministers director position approved: Willis Potratz; Cameroon Choristers tour North America; Donald Ganstrom, interim church growth director

1982

40th Triennial Conference, Niagara Falls, NY, Peter Fehr, moderator; adopt Conference Long-range Plans; new Conference organizational structure; adopts Statement of Beliefs

1982

Approve Capital Funds campaign: \$2,500,000; Ron Norman elected Church Extension/Church Growth Director; 366 churches; 59,370 members; more than 1,000 youth attend

Wellness • Sight/Blindness  
• Doors/Gates/Paths • Birth/  
Growth/Death • Good Base-  
ments/Bad • Snakes/Doves  
• Hogs/Dogs • Leaves/Fruit  
• Vines/Branches • Wines/  
Bottles • Torn Clothes/Patches  
• Parents/Children • Child  
Abuse/Millstones • Camels/  
Needles • Land Deals/Treasure  
Hunts • Things Lost and  
Found . . . • Sheep, Coins,  
Children

Jesus treated people as unique, valuable persons—not projects or production-line disciples. His call to people fit who they were, where they had been, what they knew, what they needed, their hopes. His calls to persons were almost always tailored just a bit differently.

In brief, Jesus used almost everything, anything, and everywhere to turn on the Gospel light in a person's soul. We need to audit Jesus' witness, learn, and follow suit.

Can we not also be more effective in witness if we do a more careful audit on ourselves? We need to be aware of what we could do with what we have—what He could do. All of us have a redemptive story to tell. All of us have love to give. All of us know many things about life/God. All of us have experiences we can share, like working through different stages of marriage or parenting. All of us have interests, hobbies, and leisure-time pursuits, which can be used as a bridge to those outside of Christ. All of us own things we could use to witness—a house, a car, a tape, a TV, a coffee pot, a kitchen table, a book. All of us experience pain and struggle in living and in coming to faith

Honesty is a good witness. I have been saved, but I still struggle with . . . Christ has turned on the light, but I still have some darkness. I am

being healed, but I still have some wounds. I am growing up, but I still wrestle with some childishness. I have faith, but I am still searching for answers.

We all have relationships in which we can share our faith. God loves the whole world, but He asks us to love our neighbors . . . people in our families, neighborhood, school, place of work, play, and business. These close people respond best to witness; they are easiest to draw into the church; more of them join the church; more of them stay in the church than unconnected crowds.

We all have ears and hearts with which we can listen and try to understand. To make pluralism work, our witness must be more dialogical. We need to be willing to hear people tell about their history, gods, faith, doubts, angers, frustrations, questions, and longings.

We all have hearts that can empathize, hands that can touch and help, and arms that can hold and hug.

We all have the indwelling Holy Spirit, the Word of God, an up-building church, loving Christian friends, and scores of other helps to encourage our effectiveness.

We need to audit ourselves. In His grace, God has loaded us with knowledge, love, possessions, memories, skills, experiences, spiritual gifts, rela-

tionships, power, honesty, ears, hearts, arms, and His promises. What are we doing with what we have? Our unique witness is related to our unique history!

My father was privileged to go only through grade eight. Yet in God's grace, he learned to witness through his struggles, his learned ability to fix almost anything, his ability to tell jokes and campfire stories, his old '36 Chevrolet which was always carting a load of teens somewhere, and his generous help to scores of older or handicapped persons in the neighborhood. He gave his fish and chips to Christ and let Him take care of the miracles.

God does not call us in the abstract. He calls us through our person, history, potentials, and opportunities. Let's put all of our lives in the Potter's hands and see what He will make for our good and His glory. What are we letting Him do with what we have? ☐



Dr. Ron Mayforth became Area Ministries Director, N.A.B. Conference. Previously, he served as Professor of Pastoral Theology at Edmonton (Alberta) Baptist Seminary.

## Selected Primary Long-range Goals of the North American Baptist Conference for 1990 - 2000

- Provide resource materials and training opportunities for churches to effectively implement six Biblical Imperatives: Worship, Grow, Witness, Serve, Give, and Care.
- Assist Associations to plant 150 churches and raise the necessary expansion ministry funds needed for this.
- Expand the mission commitment of our churches to include a greater emphasis on evangelizing people in Canada and the United States.
- Assist the North American Baptist Seminary and Edmonton Baptist Seminary in implementing church planter tracks to prepare church planters for ministry.
- Assist North American Baptist Conference churches in their outreach ministry to increase total worship attendance by forty percent or about four percent annually. Research,

- plan, and initiate church planting ministries among 12 new unreached people groups on our present mission fields as well as establish a new mission field.
- Participate in evangelistic efforts overseas resulting in 50,000 recorded decisions for Christ leading to baptism and membership in a local church.
- Assist the overseas national conventions to increase the number of churches by a net of 30 percent.
- Help train 1,000 national ministers overseas.
- Raise and distribute \$1,000,000 for world relief and development.
- Assist the overseas national Baptist conventions in discipleship education resulting in churches that are self-governing, self-supporting, and self-propagating.
- Recruit and train 500

- professional leaders at our schools to follow God's call to service in our Conference and the wider Christian body.
- Assist churches to plan ministry for meeting the needs and utilizing the potential of the growing number of aging persons.
- Encourage North American Baptist Conference educational institutions to cooperatively develop extension theological education opportunities for the laity and ministers.
- Adhere to the highest level of accountability and integrity in all financial activities of our Conference, Associations, and our churches.
- Encourage churches to develop plans for inter-cultural ministries.
- Work toward religious liberty, justice, and dignity for all people and peace among nations of the world.



1982

J. Walter Goltz, president, NABC/DS

1984

NABDS grants MTS degree

1985

41st Triennial Conference, Anaheim, CA, Gene Kern, moderator; Task Force on Ordination reports

1985

Five Biblical Imperatives adopted; Ron Salzman elected missions director; New Churches Fund approved

1987

David Sems, church growth ministries director

1988

42nd Triennial Conference, Calgary, AB, Ernie Radke, moderator; 8,000 to 9,000 attend

1988

Adopts **Vision 2000** with goals to year 2000 and six Biblical Imperatives; and New Churches . . . New Life; 65-year-age limit approved for elected directors; Task Force on Theological Education

1988

First missionaries to Philippines appointed: Leland and Jennell Bertsch; NABC affiliates with U. of Alberta; Paul Siewert, president of NABC/DS Linda Ebel, WMF director

1989

Lewis Petrie, development director

1990

Ministers' Family Conference, Edmonton, AB; N.A.B. Divinity School changes name to Edmonton Baptist Seminary

1990

Missionaries to Eastern Europe: Harold Dresslers; Ron Salzman, management services director; Herman Effa, missions director

1991

Ron Mayforth, area ministries director; acting church growth ministries director; Seminaries join to launch capital funds campaign

1991

43rd Triennial Conference Milwaukee, WI, Harvey Mehlhaff, moderator

# Baptist Herald

1 So. 210 Summit Ave.  
Oakbrook Terrace, IL 60181-3994  
Telephone: (708) 495-2000; Fax: (708) 495-3301

Non-profit organization  
second class postage  
paid at Villa Park, Illinois 60181  
and at additional mailing offices

Registered as Second Class Mail  
under permit #9327 at Norwich, Ontario  
Return postage guaranteed

## COMMISSIONED TO

# WITNESS

**Scripture:** *"But you will receive power when the Holy Spirit comes on you; and you will be my witnesses in Jerusalem, and in all Judea and Samaria, and to the ends of the earth" (Acts 1:8, NIV).*

**Definition:** **Witnessing is communicating the Gospel of Christ in word and action with people of the world, calling them to commitment to Christ and the Church, and discipling them toward Christian maturity and service.**

- Goal 1.** Raise the awareness that Scripture teaches the "lostness" of all humanity and that it is imperative to be redeemed through Christ.
- Goal 2.** Seek to understand our diverse culture and become intentional in our witness through an appropriate local church program and cultivate individual witness in the neighborhood and marketplace.
- Goal 3.** Seek to revitalize the prayer life of individuals and the local church through a focus on praying for the lost.
- Goal 4.** Encourage pastors, area ministers, Conference leaders, and educational personnel to model life-style evangelism.
- Goal 5.** Identify, train, and organize a minimum of five percent of the people in each N.A.B. Conference church to develop witnessing growth groups for local outreach.
- Goal 6.** Redirect financial resources to give higher priority to witnessing.
- Goal 7.** Enlist N.A.B. Seminary, Edmonton Baptist Seminary, and N.A.B. College in advancing this Imperative by reviewing and modifying their programs as necessary.
- Goal 8.** Expand the mission commitment of the North American Baptist Conference and churches to greater emphasis on the evangelization of North America (Canada and U.S.A.)
- Goal 9.** Increase the mission and commitment to evangelize and disciple the vast number of unreached people overseas.